

You have never thought
of doing thing this way

a100tek
Waterproof Connector Series

About Us



Previously known as a design company of Auto-tech since 2003, A100tek has derived from several highly acclaimed professionals in the industry. In order to take our services and solutions up another notch, we have combined capable partners in the field, thus the birth of A100tek.

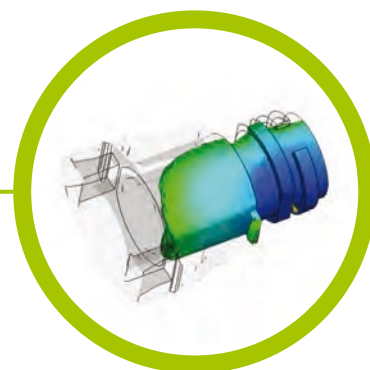
Headquarter based in Taiwan, and with research and development centers in the USA and Japan, our manufacturing facilities in China, with strict quality assurance systems.

We define ourselves as product design solution provider in the market. Customer satisfaction and fulfillment of their technological needs are achieved through series of interactions with our clients. Our designs evolve with our innovations to continuously improve and create products that the market yearns for.

A100tek is well rounded in every aspect, providing complete solution all in one stop. We continues to strive with our dedicated professionalism, endlessly seeking to be ahead of the game, to be in the front line of the industry trend. We are not pursuing to be the number one in the word, but to be the unique provider in the industry.

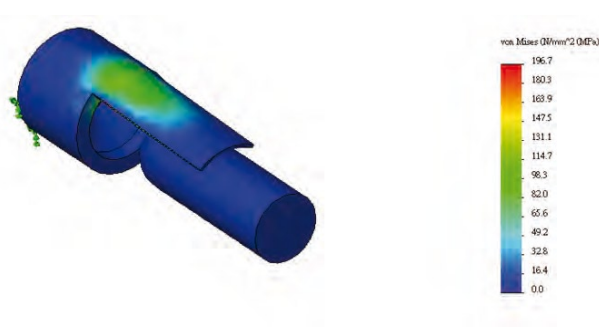
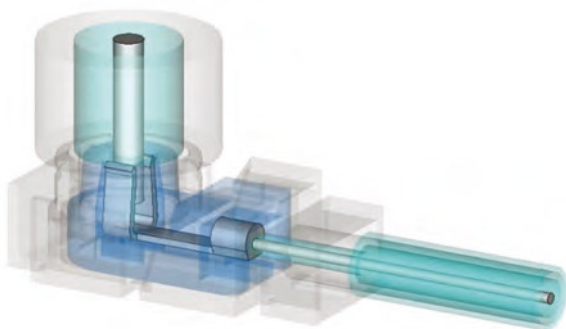
Capability

We define ourselves as product design solution provider in the market. Customer satisfaction and fulfillment of their technological needs are achieved through series of interactions with our clients, and through our expertise in leading connectors technology. Not only we are capable of satisfying all our clients' current product demands, we are also able to add value to their current products. Our designs evolve with our innovations to continuously improve and create products that the market yearns for.



Engineering Analysis

Our RD centers are able to perform a wide variety of testing. From simulation model, mold flow analysis, to stress analysis, we have them all. Not to mention high frequency analysis for newest products in the industry, with smith chart and TDR impedance test, you are in control of the product specification. Our testing laboratory is also capable to assist you with certifications or qualification assessments.



Facilities

Our facility in Shanghai and Shenzhen of China is capable of producing moldings, stampings and assemblies from big to small projects. We have all the machinery required to produce mini wire to board connectors all the way to large cable assembly. We also have complete testing laboratory to ensure all our products are made according to regulations and specifications

Index

M5



1

M8



6

M9



16

M12



19

M13



42

M16



44

M23



46

USB



51

HDMI



54

RJ45



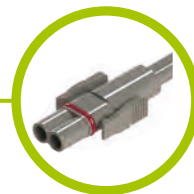
55

BNC



56

SNAP IN



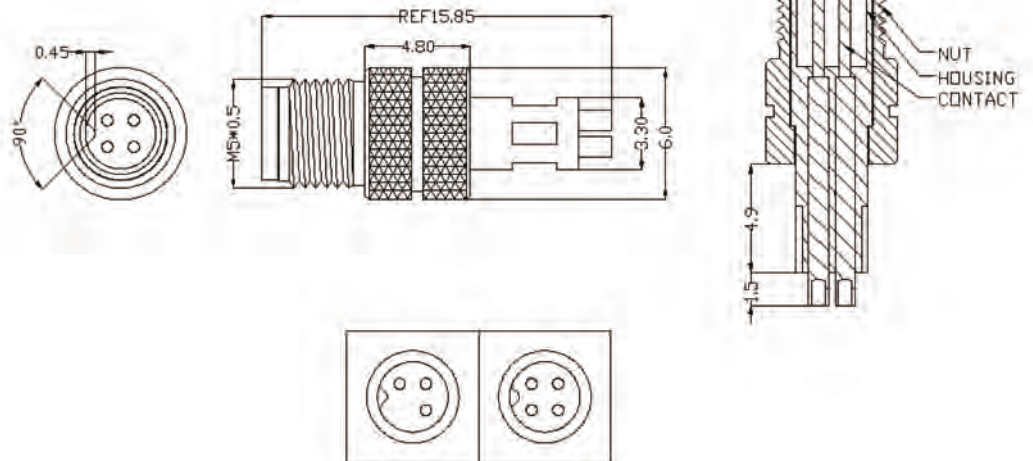
58

M5 · Cable End · Male · Screw · Overmolded Straight Solder



Specification :

- Rated current : 1A
- Rated Voltage : 60V
- Water proof : IPX7



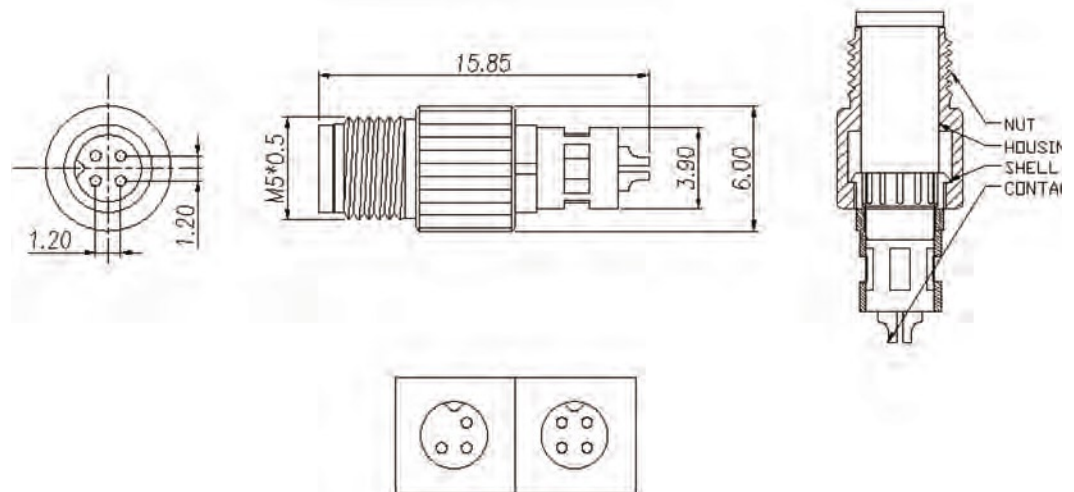
M05-001N

M5 · Cable End · Male · Screw · Overmolded Straight Solder · Ground



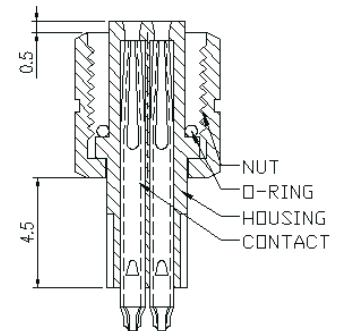
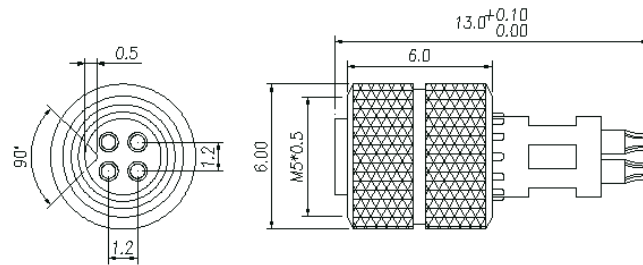
Specification :

- Rated current : 1A
- Rated Voltage : 60V
- Water proof : IPX7



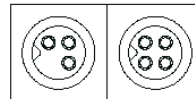
M05-002N

M5 · Cable End · Female · Screw · Overmolded Straight Solder



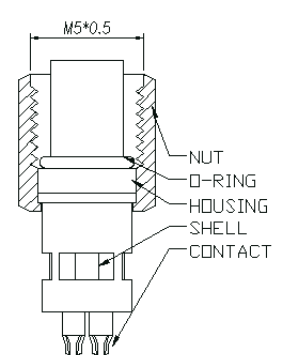
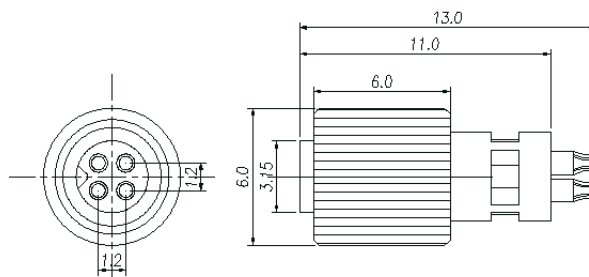
Specification :

- Rated current : 1A
- Rated Voltage : 60V
- Water proof : IPX7



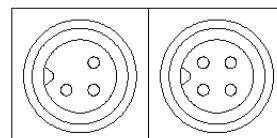
M05-005N

M5 · Cable End · Female · Screw · Overmolded Straight Solder · Ground



Specification :

- Rated current : 1A
- Rated Voltage : 60V
- Water proof : IPX7



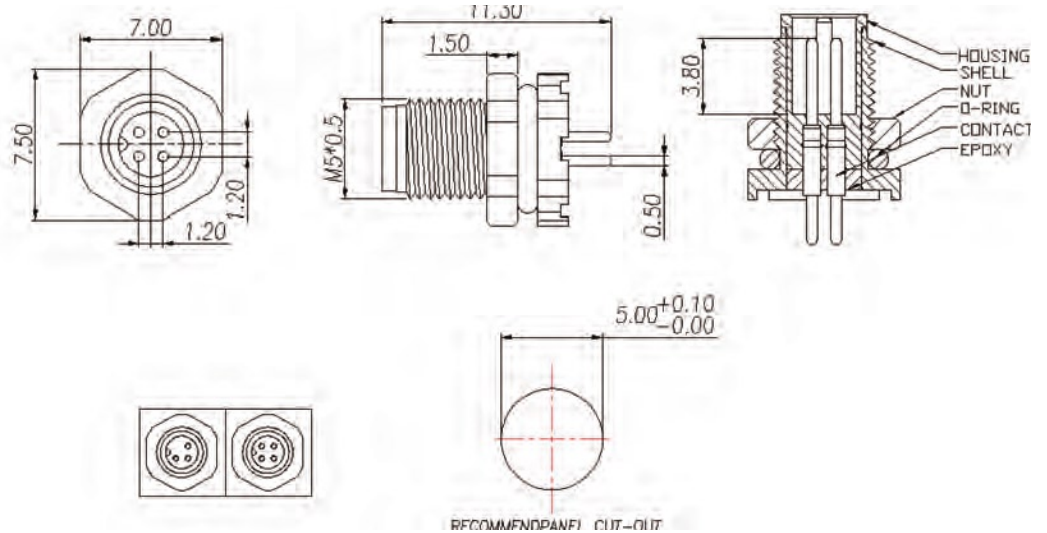
M05-006N

M5 · Panel End · Male · Screw · Front Fastened 180° PCB



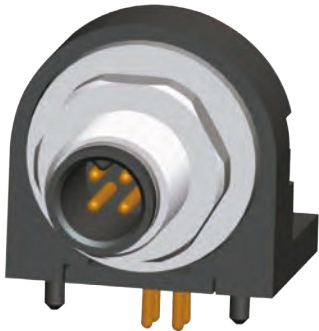
Specification :

- ▶ Rated current : 1A
- ▶ Rated Voltage : 60V
- ▶ Water proof : IPX7



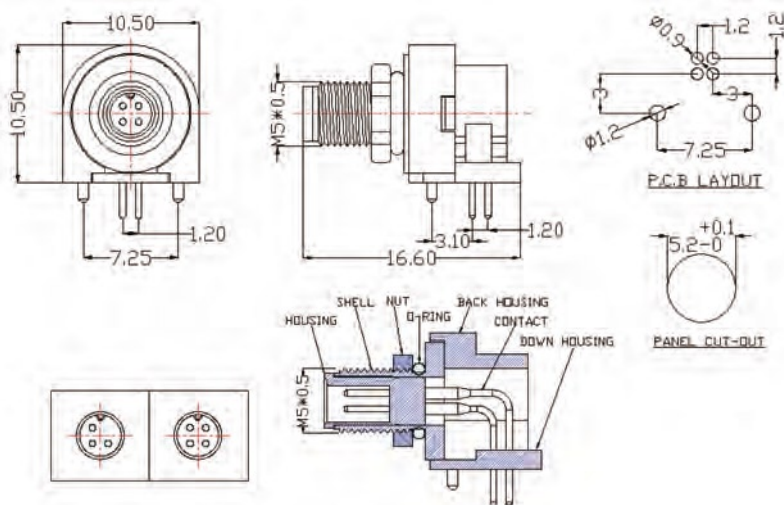
M05-003N

M5 · Panel End · Male · Screw · Front Fastened 90° PCB



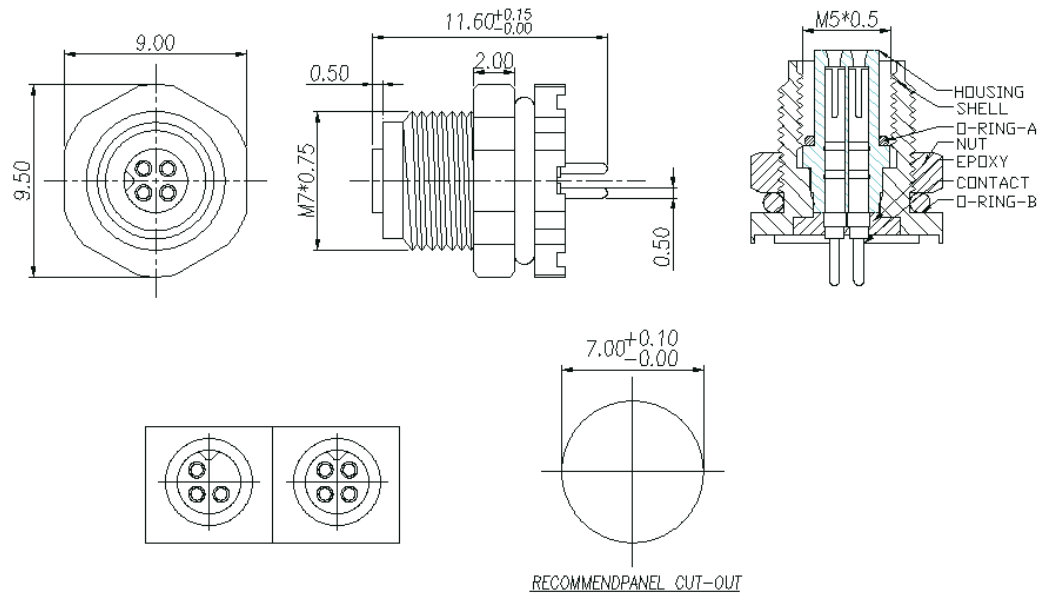
Specification :

- ▶ Rated current : 1A
- ▶ Rated Voltage : 60V
- ▶ Water proof : IPX7



M05-004N

M5 · Panel End · Female · Screw · Front Fastened 180° PCB

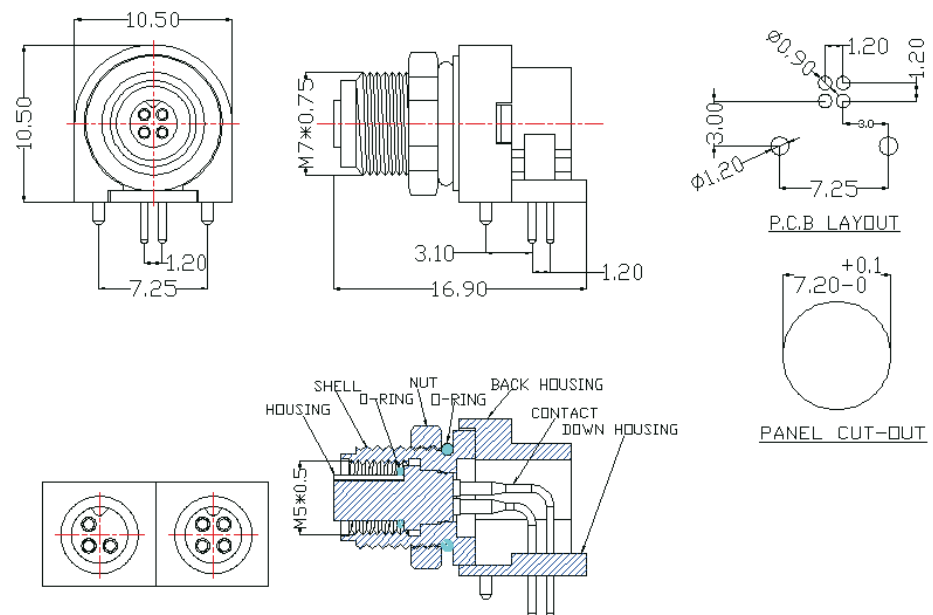
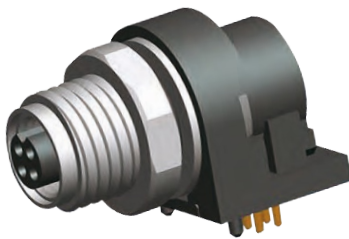


Specification :

- ▶ Rated current : 1A
- ▶ Rated Voltage : 60V
- ▶ Water proof : IPX7

M05-007N

M5 · Panel End · Female · Screw · Front Fastened 90° PCB

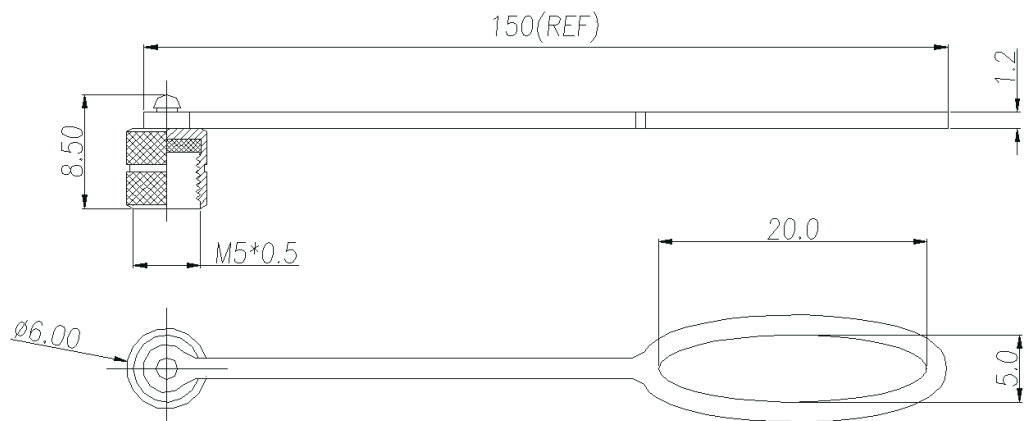


Specification :

- ▶ Rated current : 1A
- ▶ Rated Voltage : 60V
- ▶ Water proof : IPX7

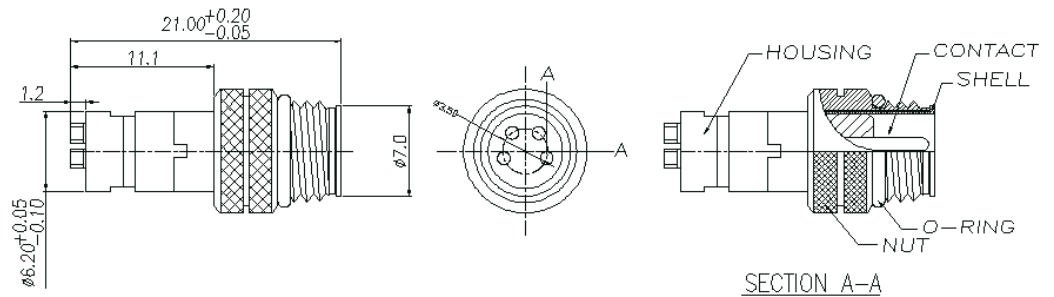
M05-008N

M5 · Accessories · Cap(Metal) w/O-ring, Chain(Plastic)



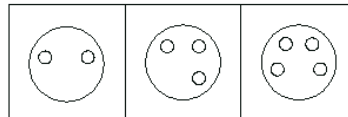
M05-097N

M8 · Cable End · Male · Screw · Overmolded Straight Solder



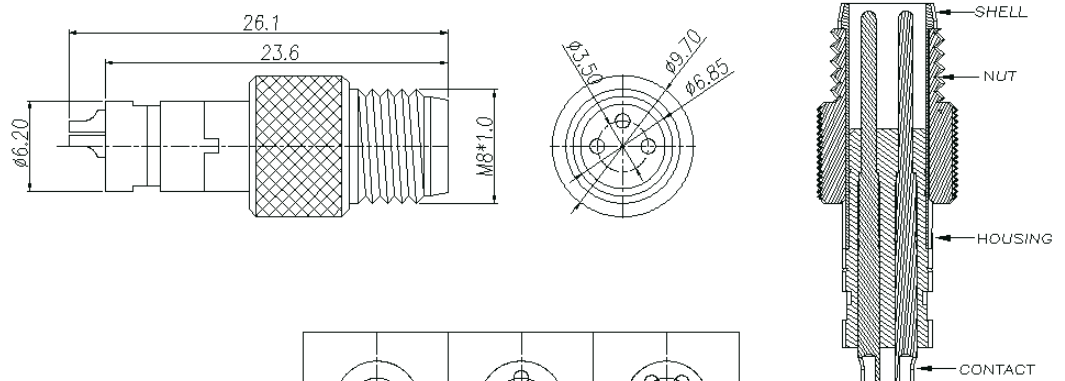
Specification :

- ▶ Rated current : 3A
- ▶ Rated Voltage : 125V
- ▶ Water proof : IPX7



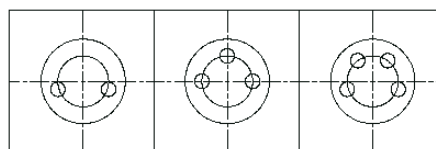
M08-009N

M8 · Cable End · Male · Screw · Overmolded Straight Solder



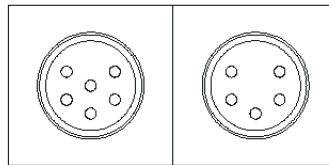
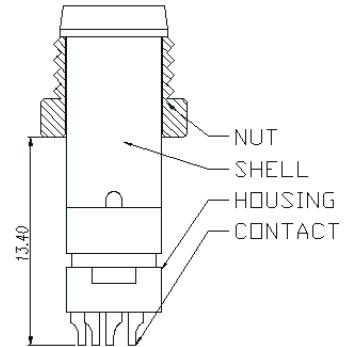
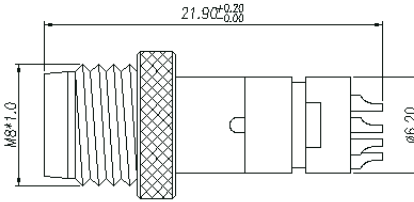
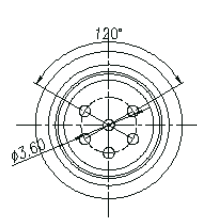
Specification :

- ▶ Rated current : 3A
- ▶ Rated Voltage : 125V
- ▶ Water proof : IPX7



M08-010N

M8 · Cable End · Male · Screw · Overmolded Straight Solder

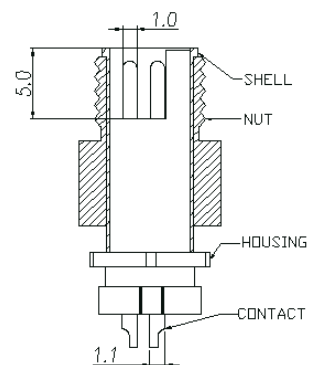
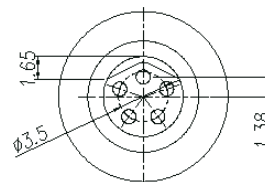
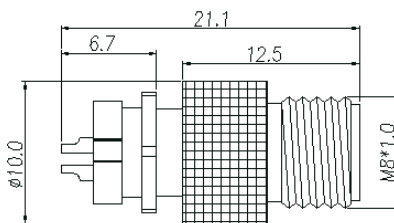


Specification :

- ▶ Rated current : 3A
- ▶ Rated Voltage : 125V
- ▶ Water proof : IPX7

M08-011N

M8 · Cable End · Male · Screw · Overmolded Straight Solder

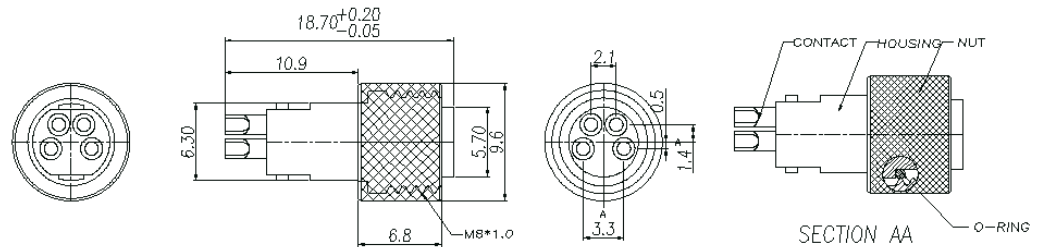


Specification :

- ▶ Rated current : 5A
- ▶ Rated Voltage : 125V
- ▶ Water proof : IPX7

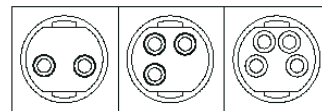
M08-017N

M8 · Cable End · Female · Screw · Overmolded Straight Solder



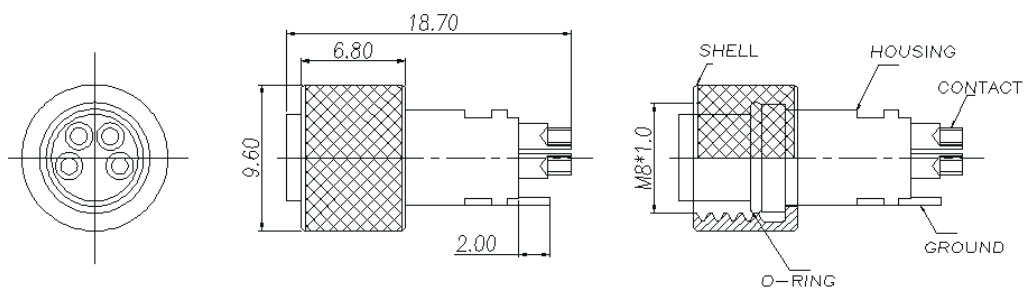
Specification :

- Rated current : 5A
- Rated Voltage : 125V
- Water proof : IPX7



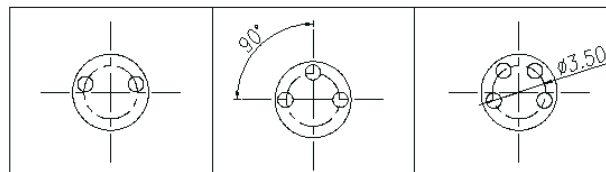
M08-018N

M8 · Cable End · Female · Screw · Overmolded Straight Solder · Ground



Specification :

- Rated current : 5A
- Rated Voltage : 125V
- Water proof : IPX7



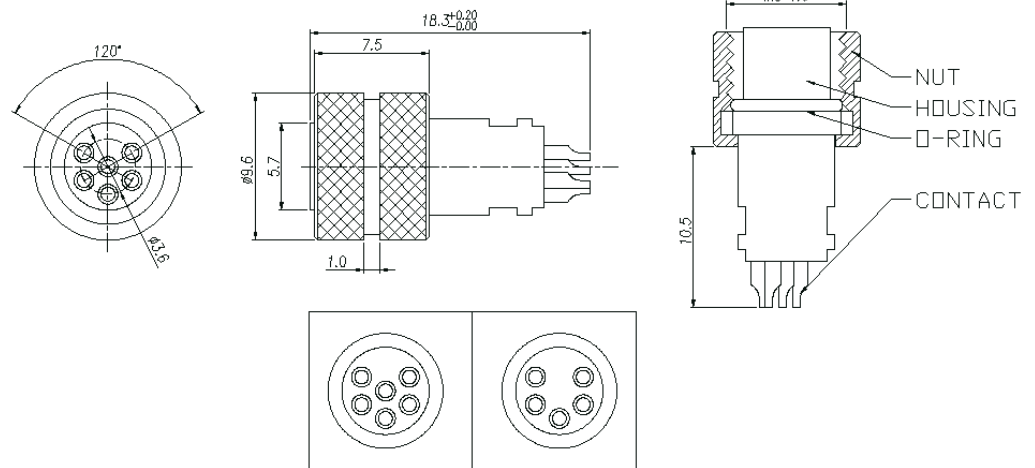
M08-019N

M8 · Cable End · Female · Screw · Overmolded Straight Solder



Specification :

- ▶ Rated current : 3A
- ▶ Rated Voltage : 125V
- ▶ Water proof : IPX7



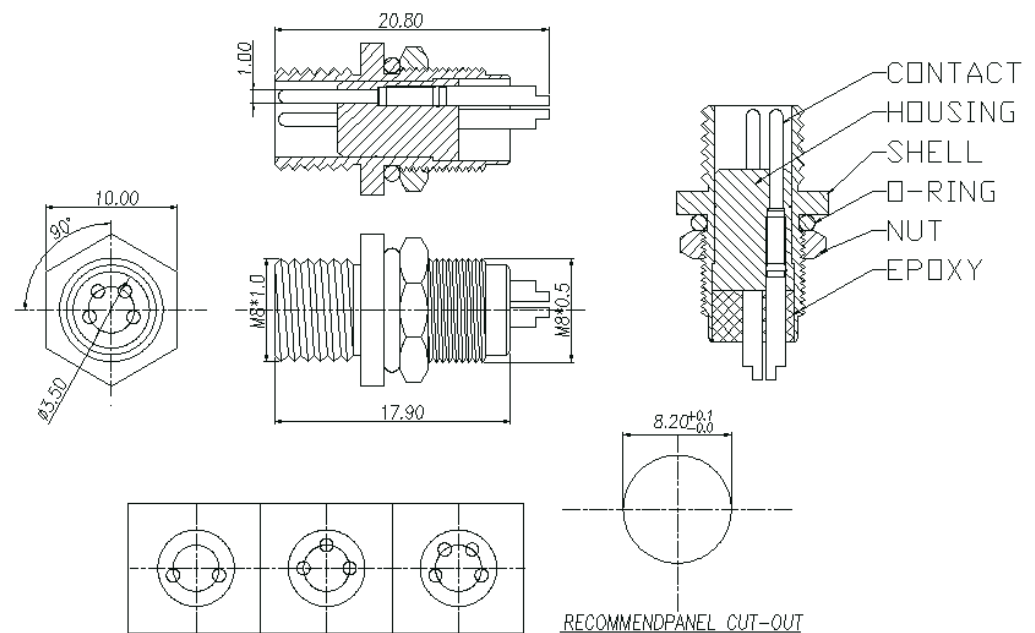
M08-020N

M8 · Panel End · Male · Screw · Rear Fastened Solder



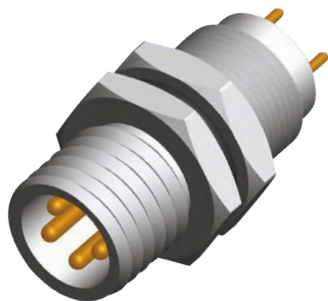
Specification :

- ▶ Rated current : 5A
- ▶ Rated Voltage : 125V
- ▶ Water proof : IPX7



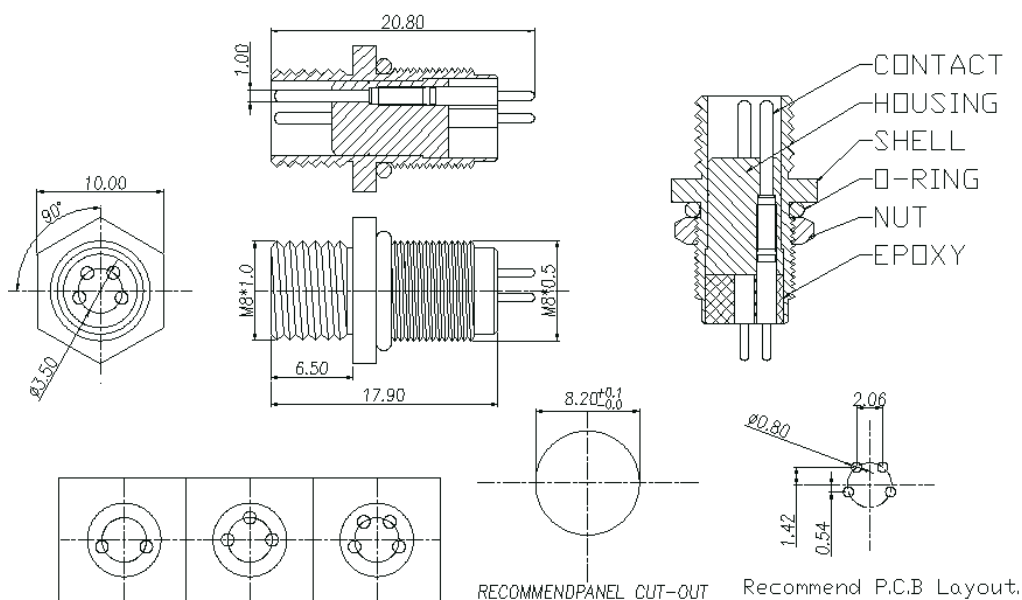
M08-015N

M8 · Panel End · Male · Screw · Rear Fastened 180° PCB



Specification :

1. Rated current : 3A
2. Rated Voltage : 125V
3. Water proof : IPX7

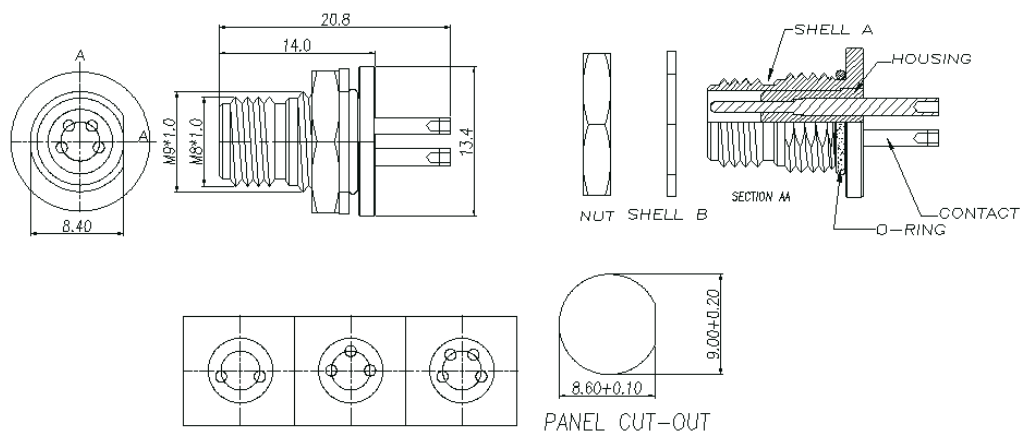
 M08-016N

M8 · Panel End · Male · Screw · Front Fastened Solder



Specification :

- ▶ Rated current : 5A
- ▶ Rated Voltage : 125V
- ▶ Water proof : IPX7

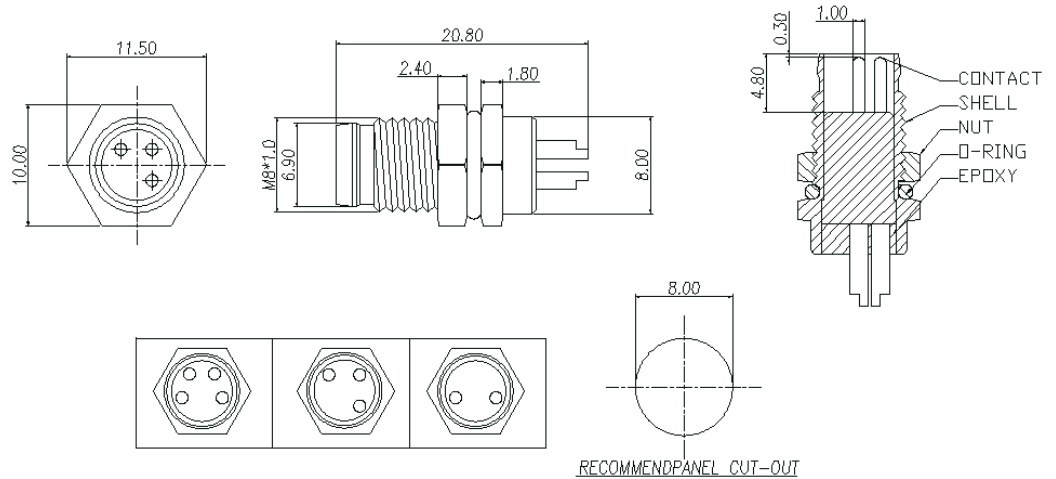
-  M08-012N

M8 · Panel End · Male · Screw · Front Fastened Solder



Specification :

- ▶ Rated current : 5A
- ▶ Rated Voltage : 125V
- ▶ Water proof : IPX7



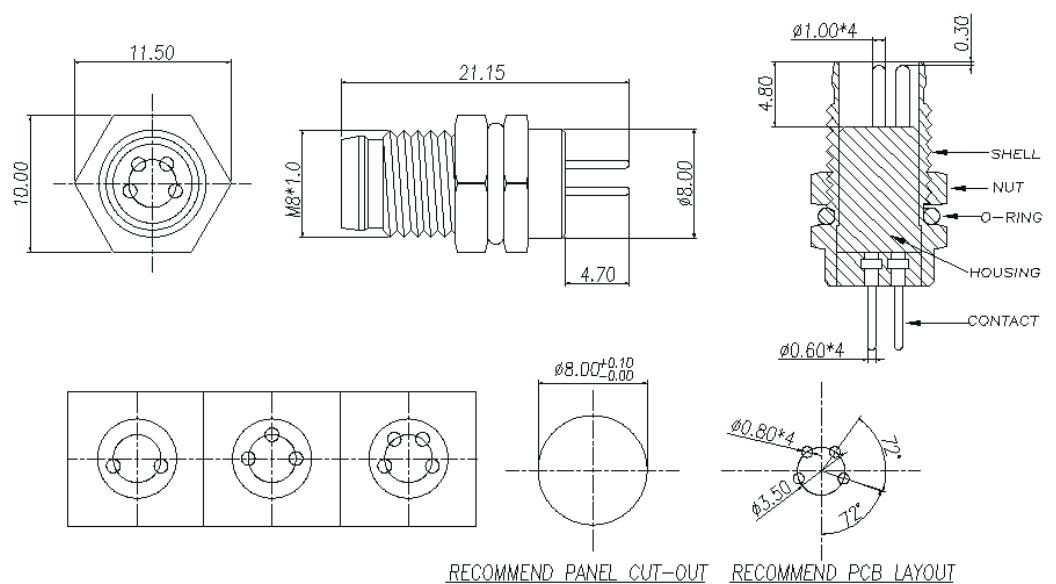
M08-013N

M8 · Panel End · Male · Screw · Front Fastened 180° PCB



Specification :

- ▶ Rated current : 5A
- ▶ Rated Voltage : 125V
- ▶ Water proof : IPX7



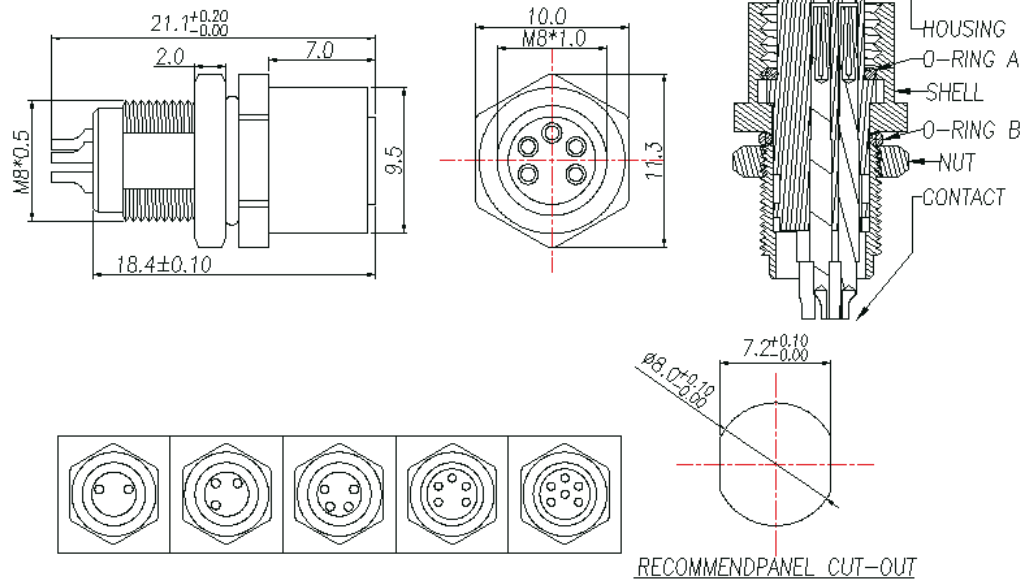
M08-014N

M8 · Panel End · Female · Screw · Rear Fastened Solder



Specification :

- ▶ Rated current : 5A
- ▶ Rated Voltage : 125V
- ▶ Water proof : IPX7



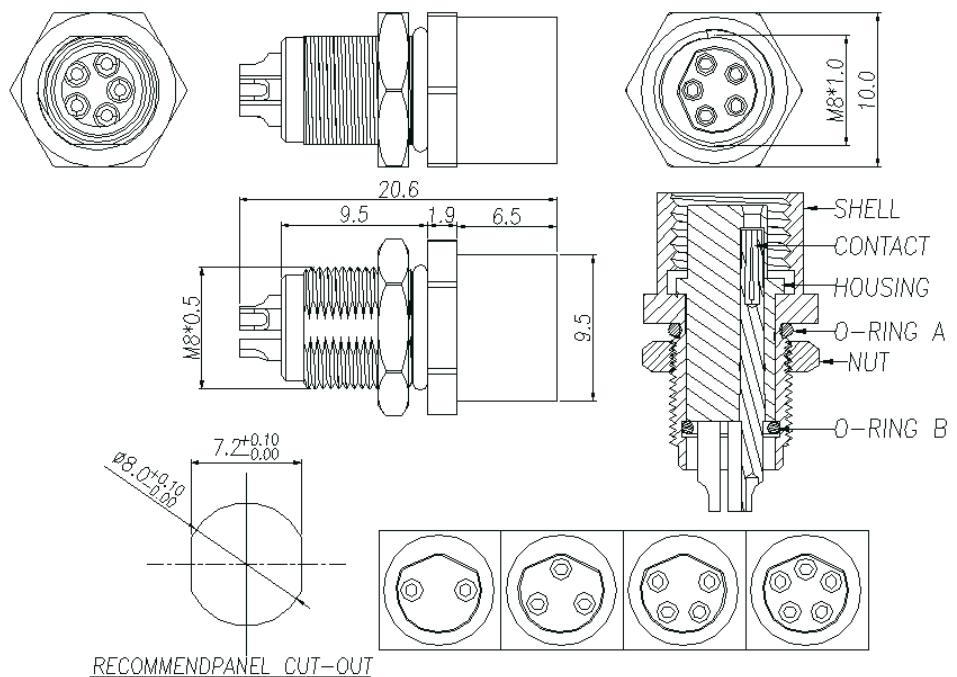
M08-023N

M8 · Panel End · Female · Screw · Rear Fastened Solder



Specification :

- ▶ Rated current : 5A
- ▶ Rated Voltage : 125V
- ▶ Water proof : IPX7



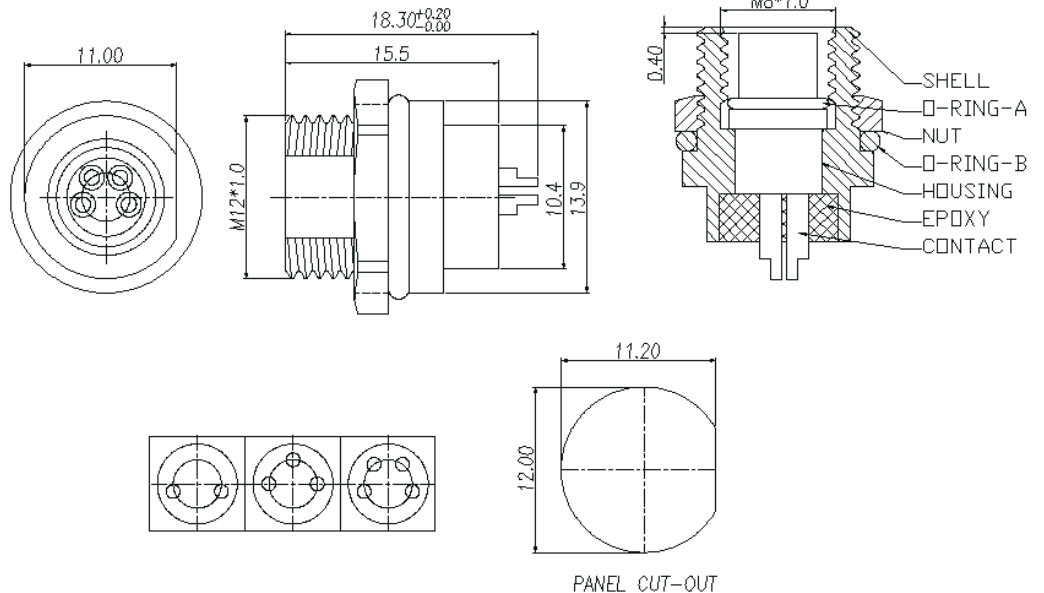
M08-024N

M8 · Panel End · Female · Screw · Front Fastened Solder



Specification :

- ▶ Rated current : 5A
- ▶ Rated Voltage : 125V
- ▶ Water proof : IPX7



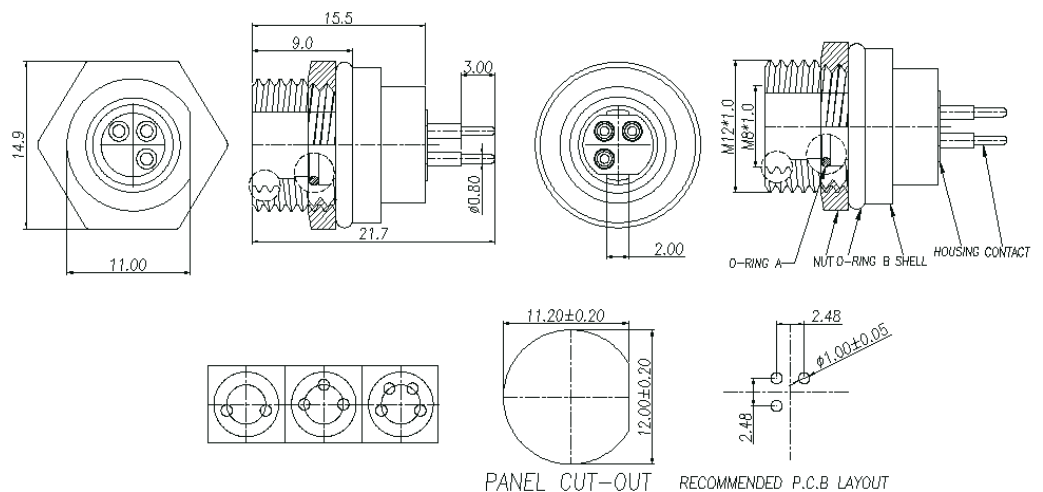
M08-021N

M8 · Panel End · Female · Screw · Front Fastened 180° PCB



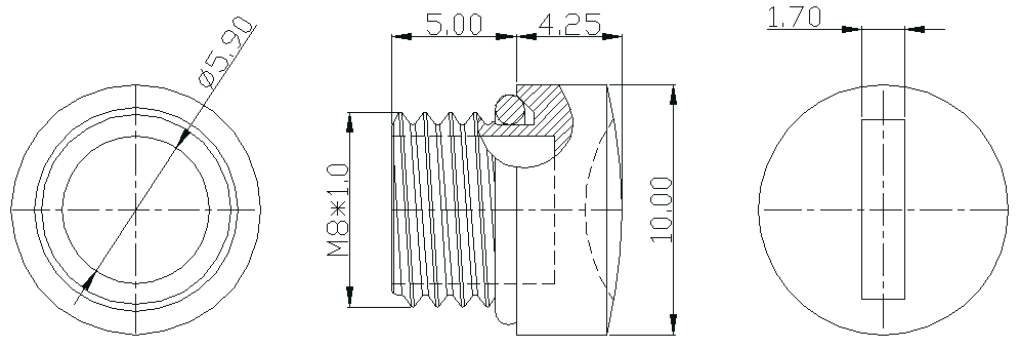
Specification :

- ▶ Rated current : 5A
- ▶ Rated Voltage : 125V
- ▶ Water proof : IPX7



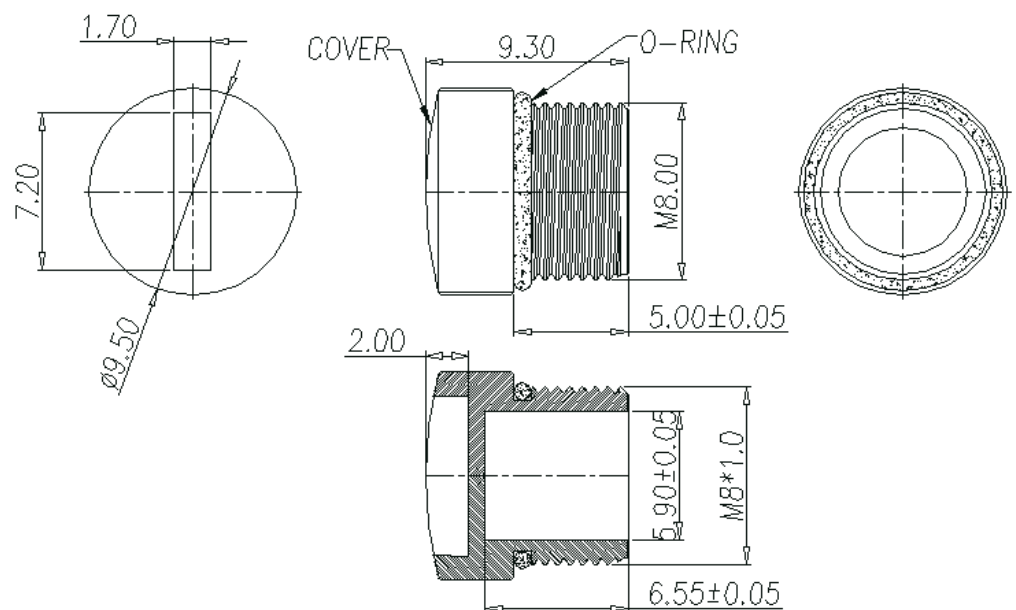
M08-022N

M8 · Accessories · Cap(Metal) w/O-ring



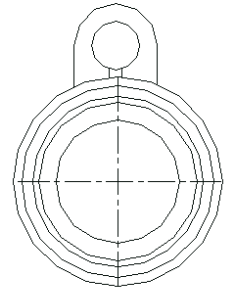
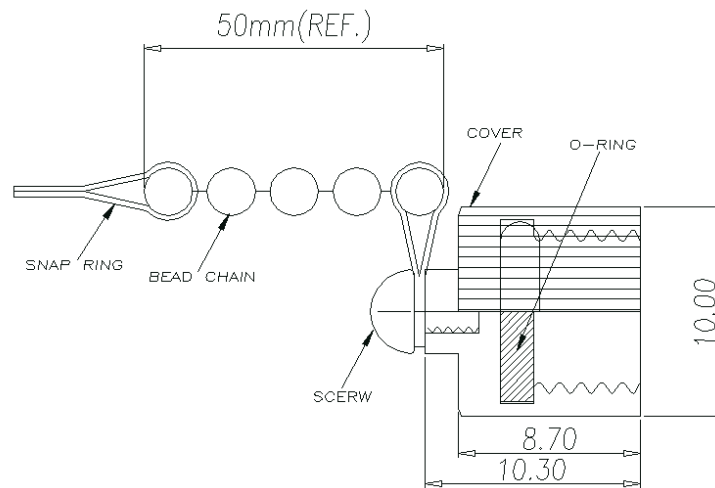
M08-098N

M8 · Accessories · Cap(Plastic) w/O-ring



M08-099N

M8 · Accessories · Cap(Metal) w/O-ring, Chain(Metal)



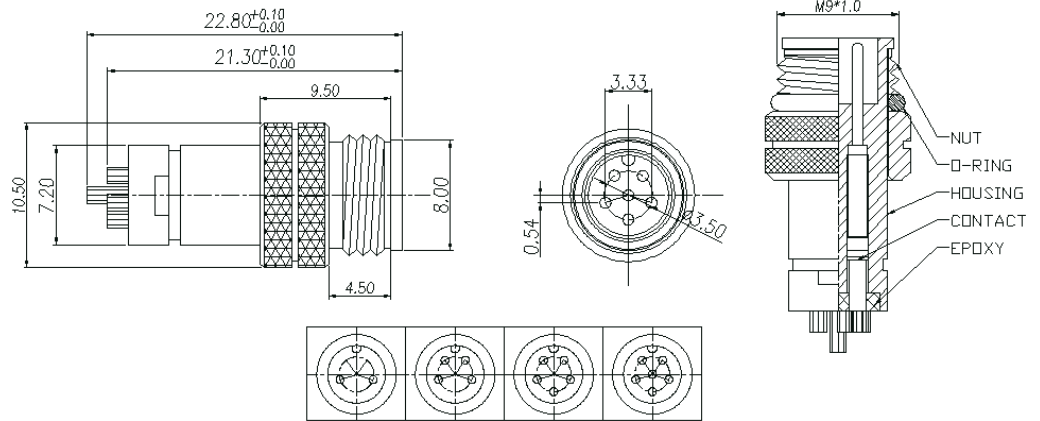
M08-100N

M9 · Cable End · Male · Screw · Overmolded Straight Solder



Specification :

- ▶ Rated current : 5A
- ▶ Rated Voltage : 125V
- ▶ Water proof : IPX7



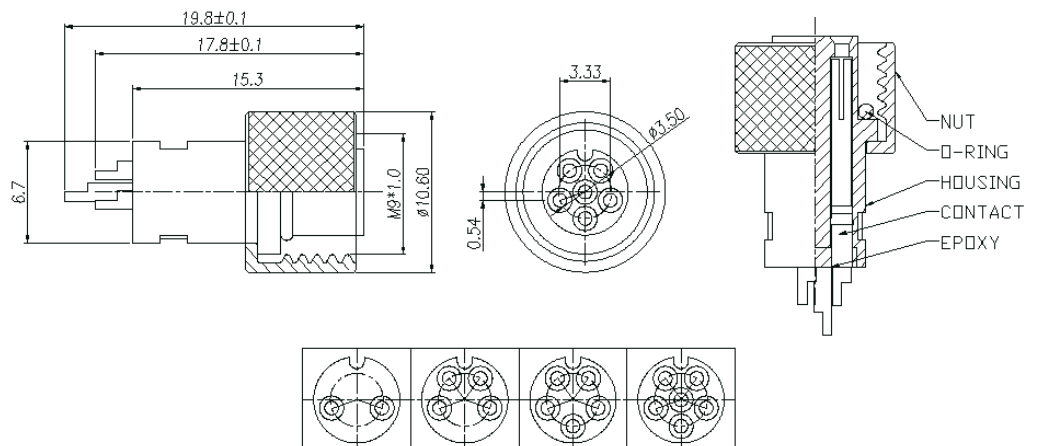
M09-025N

M9 · Cable End · Female · Screw · Overmolded Straight Solder



Specification :

- ▶ Rated current : 5A
- ▶ Rated Voltage : 125V
- ▶ Water proof : IPX7



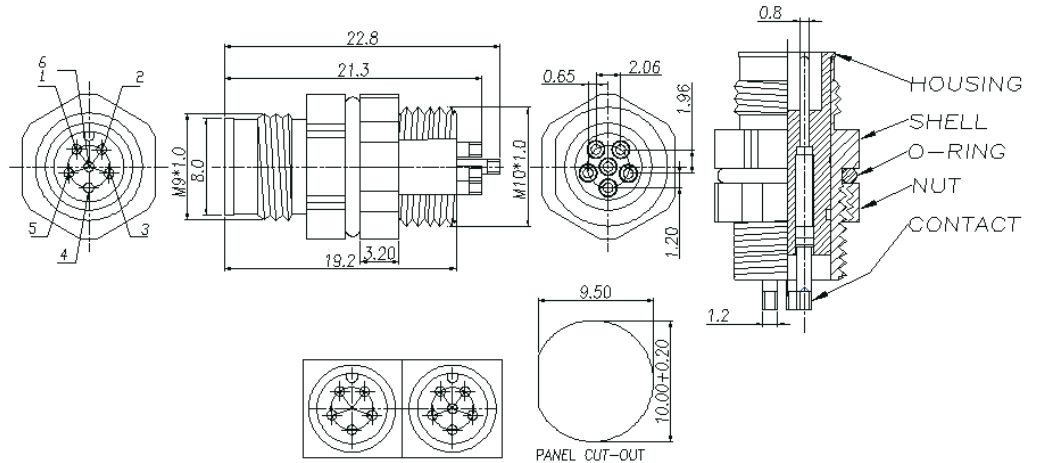
M09-028N

M9 · Panel End · Male · Screw · Rear Fastened Solder



Specification :

- ▶ Rated current : 5A
- ▶ Rated Voltage : 125V
- ▶ Water proof : IPX7



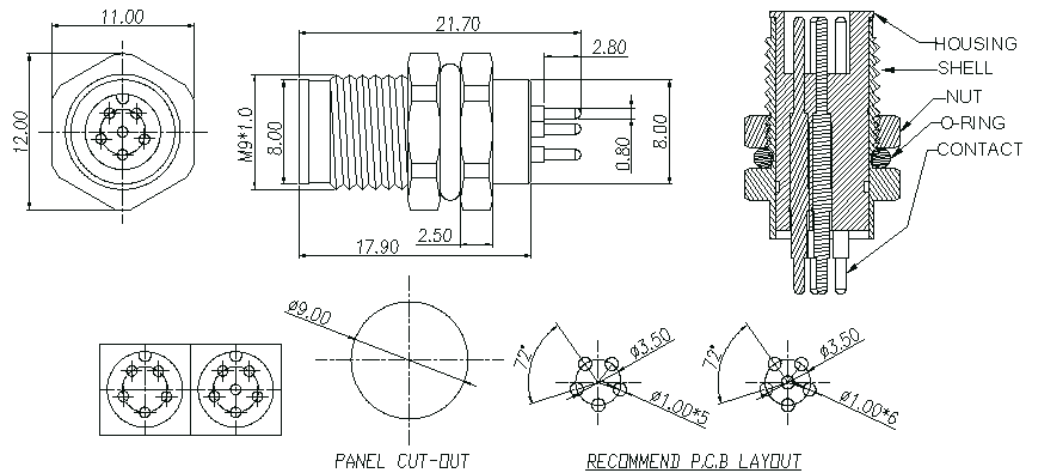
M09-027N

M9 · Panel End · Male · Screw · Front Fastened 180° PCB



Specification :

- ▶ Rated current : 3A
- ▶ Rated Voltage : 125V
- ▶ Water proof : IPX7



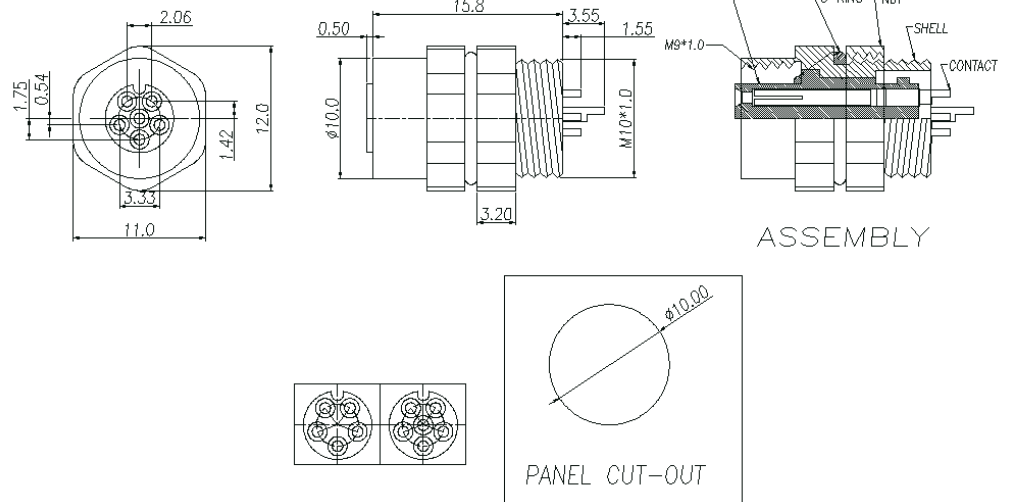
M09-026N

M9 · Panel End · Female · Screw · Rear Fastened Solder



Specification :

- ▶ Rated current : 5A
- ▶ Rated Voltage : 125V
- ▶ Water proof : IPX7



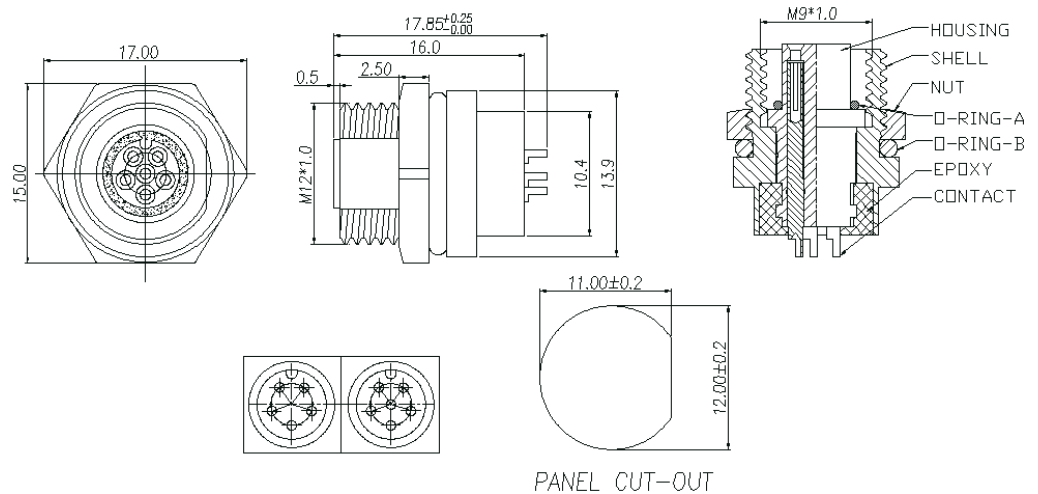
M09-030N

M9 · Panel End · Female · Screw · Front Fastened Solder



Specification :

- ▶ Rated current : 5A
- ▶ Rated Voltage : 125V
- ▶ Water proof : IPX7



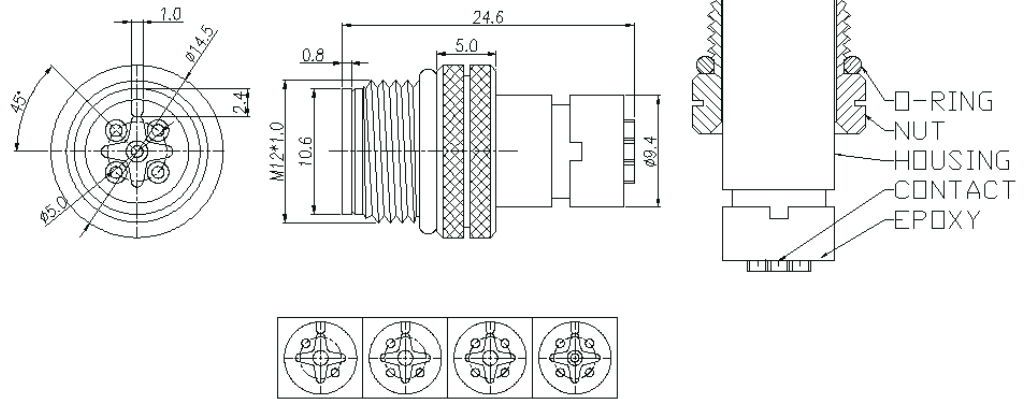
M09-029N

M12 · Cable End · Male · Screw · Overmolded Straight Solder



Specification :

- ▶ Rated current : 5A
- ▶ Rated Voltage : 125V
- ▶ Water proof : IPX7



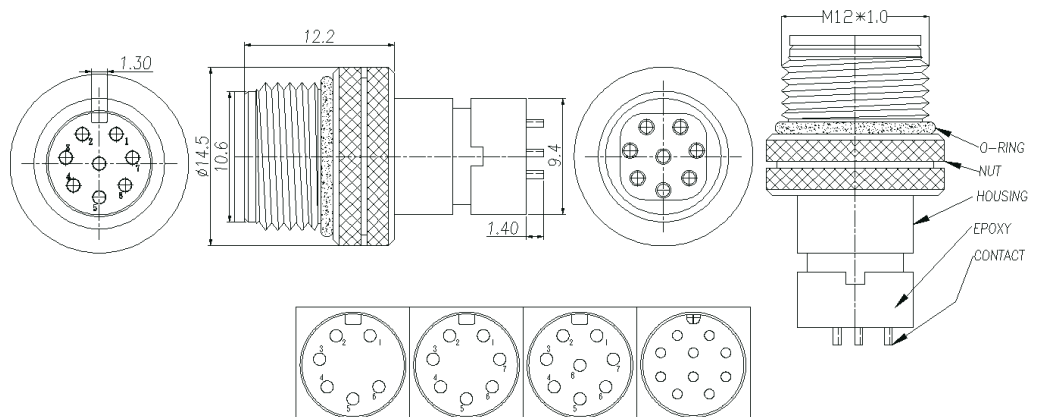
M12-031N

M12 · Cable End · Male · Screw · Overmolded Straight Solder



Specification :

- ▶ Rated current : 5A
- ▶ Rated Voltage : 125V
- ▶ Water proof : IPX7



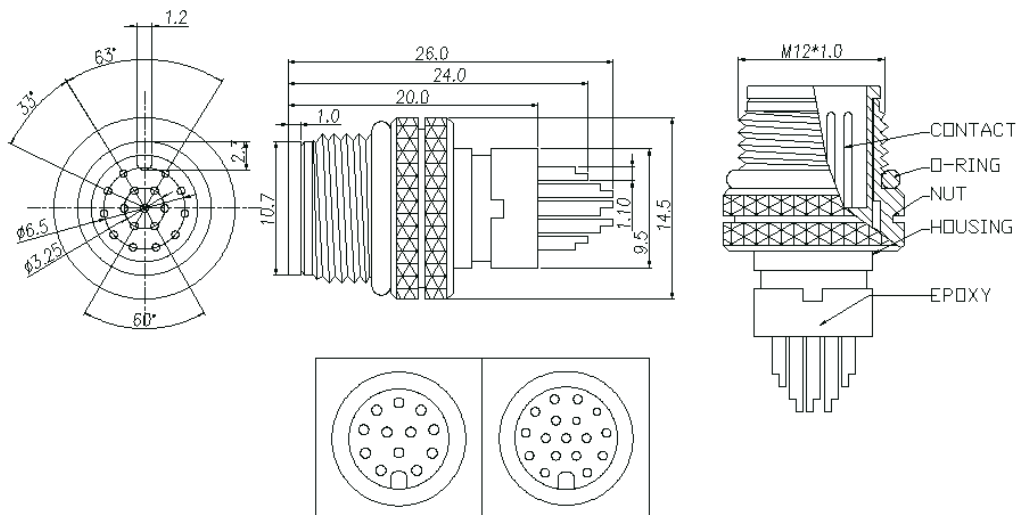
M12-032N

M12 · Cable End · Male · Screw · Overmolded Straight Solder



Specification :

- ▶ Rated current : 1A
- ▶ Rated Voltage : 30V
- ▶ Water proof : IPX7



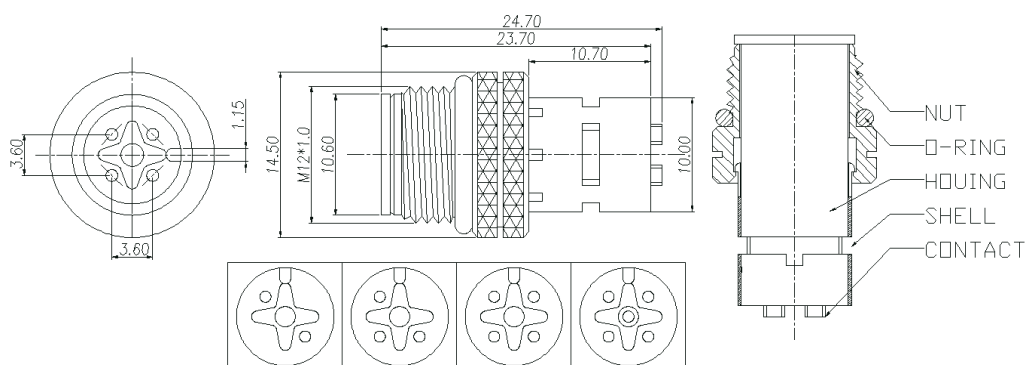
M12-033N

M12 · Cable End · Male · Screw · Overmolded Straight Solder · Ground



Specification :

- ▶ Rated current : 5A
- ▶ Rated Voltage : 125V
- ▶ Water proof : IPX7



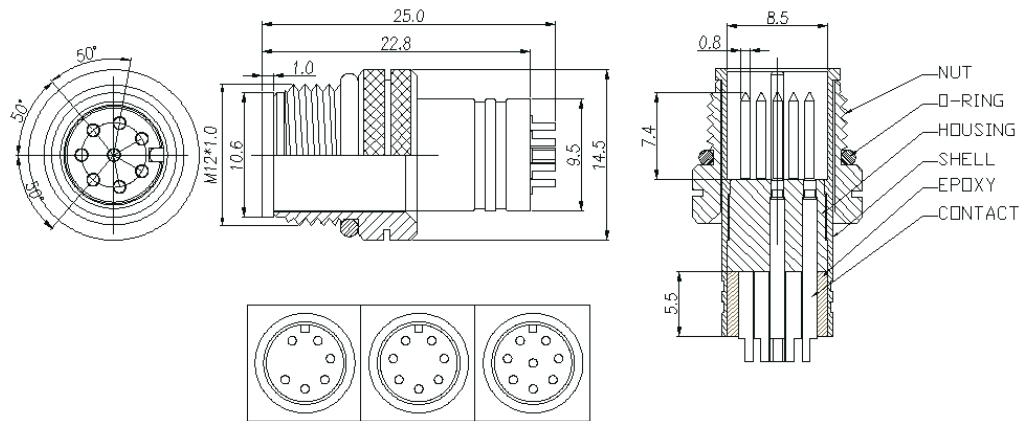
M12-034N

M12 · Cable End · Male · Screw · Overmolded Straight Solder



Specification :

- ▶ Rated current : 5A
- ▶ Rated Voltage : 125V
- ▶ Water proof : IPX7



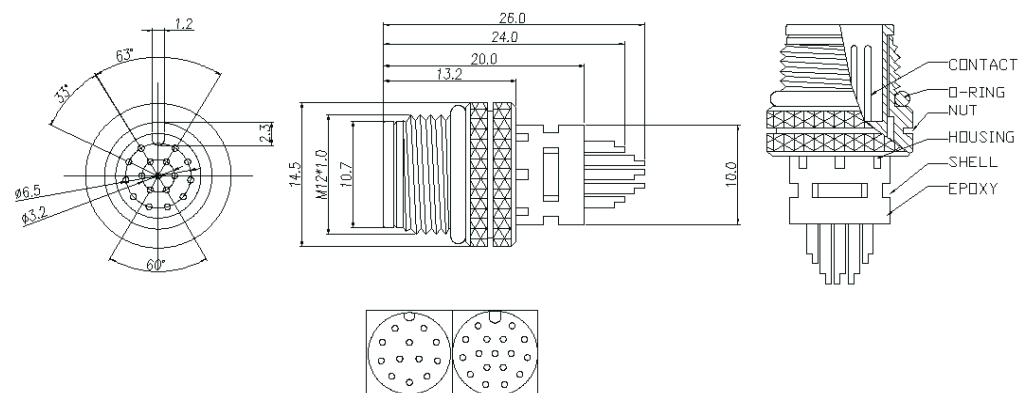
M12-035N

M12 · Cable End · Male · Screw · Overmolded Straight Solder · Ground



Specification :

- ▶ Rated current : 1A
- ▶ Rated Voltage : 30V
- ▶ Water proof : IPX7



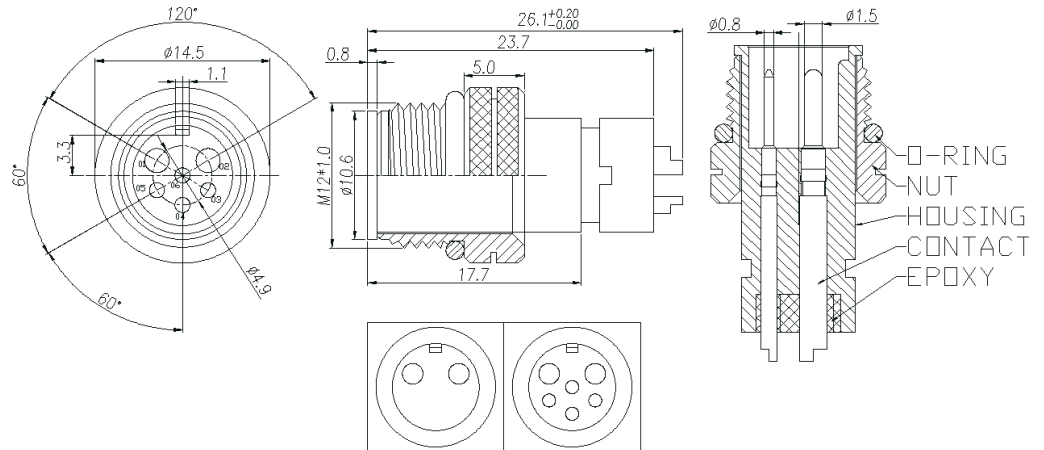
M12-036N

M12 · Cable End · Male · Screw · Overmolded Straight Solder



Specification :

- ▶ Rated current : 8A+3A
- ▶ Rated Voltage : 125V
- ▶ Water proof : IPX7



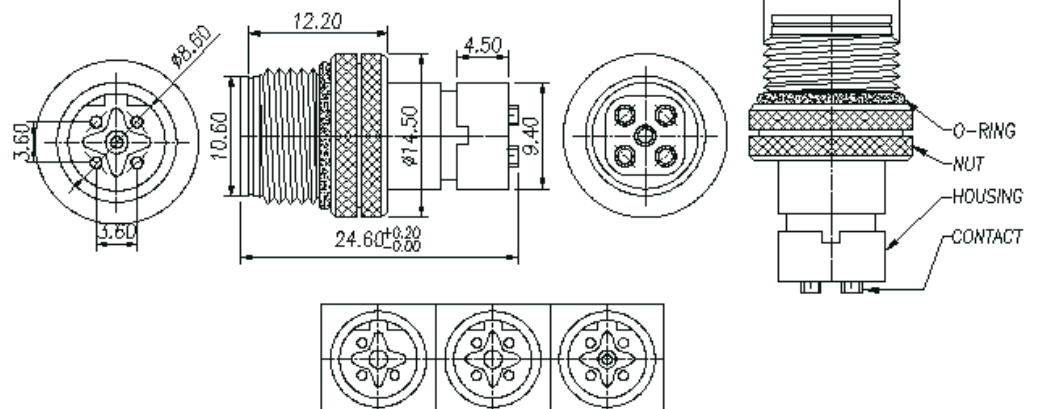
M12-038N

M12 · Cable End · Male · Screw · Overmolded Straight Solder · B Code



Specification :

- ▶ Rated current : 5A
- ▶ Rated Voltage : 125V
- ▶ Water proof : IPX7



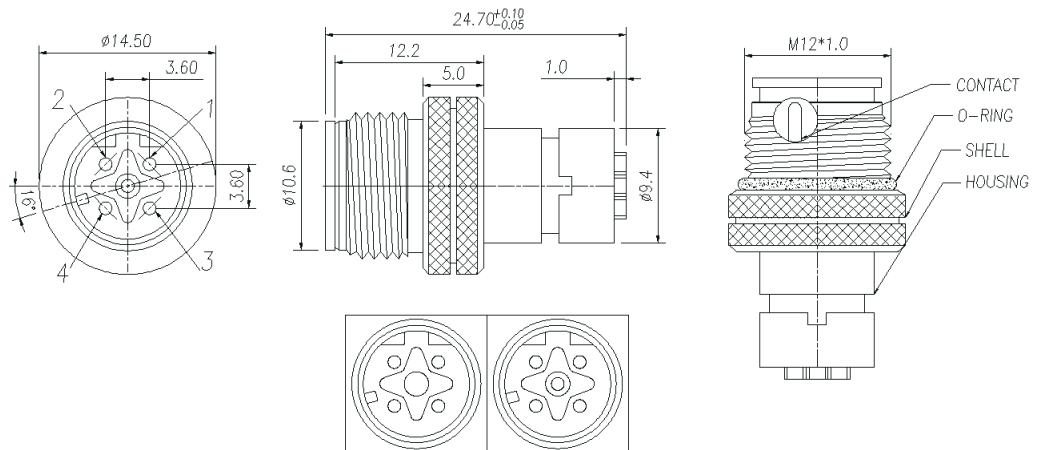
M12-064N

M12 · Cable End · Male · Screw · Overmolded Straight Solder · D Code



Specification :

- Rated current : 5A
- Rated Voltage : 125V
- Water proof : IPX7



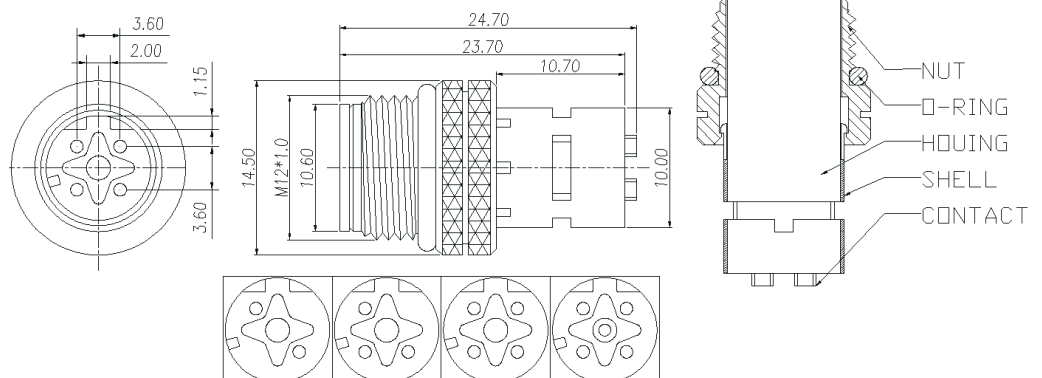
M12-066N

M12 · Cable End · Male · Screw · Overmolded Straight Solder · D Code Ground



Specification :

- Rated current : 5A
- Rated Voltage : 125V
- Water proof : IPX7



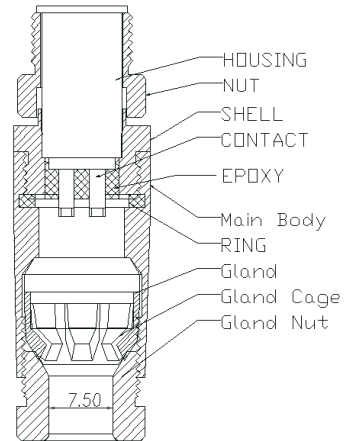
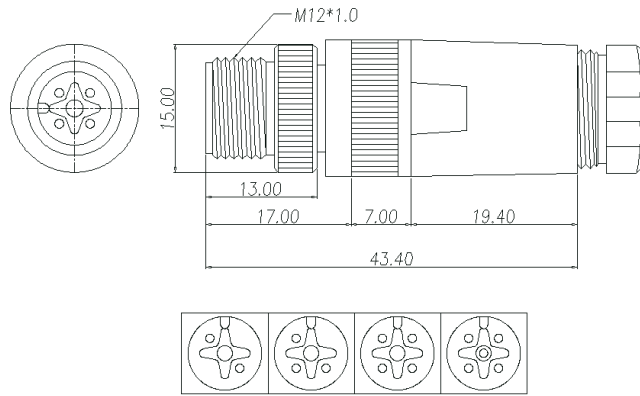
M12-067N

M12 · Cable End · Male · Screw · Assembly Solder



Specification :

- ▶ Rated current : 5A
- ▶ Rated Voltage : 125V
- ▶ Water proof : IPX7



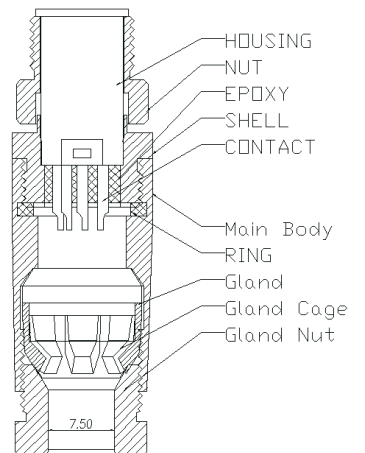
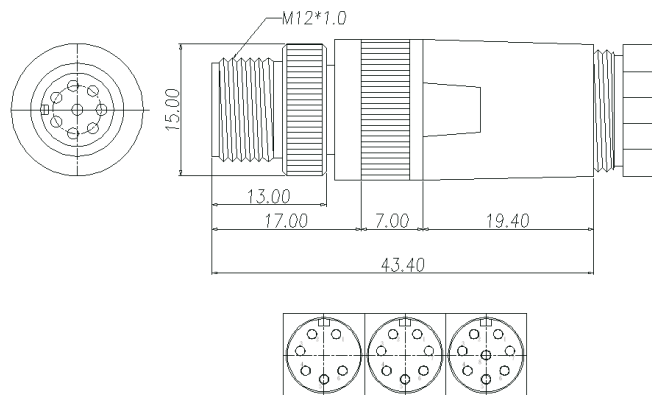
M12-039N

M12 · Cable End · Male · Screw · Assembly Solder



Specification :

- ▶ Rated current : 5A
- ▶ Rated Voltage : 125V
- ▶ Water proof : IPX7



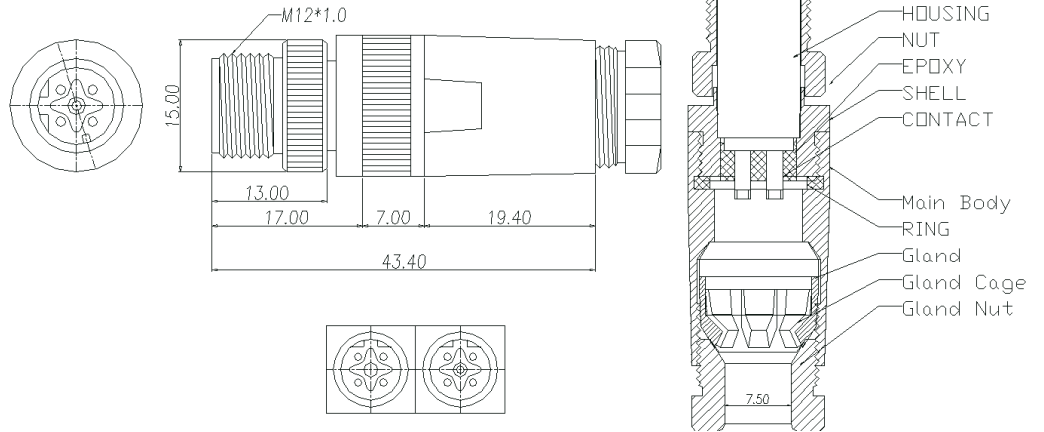
M12-040N

M12 · Cable End · Male · Screw · Assembly Solder · D Code



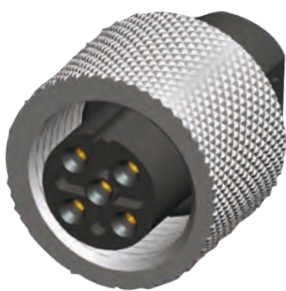
Specification :

- ▶ Rated current : 5A
- ▶ Rated Voltage : 125V
- ▶ Water proof : IPX7



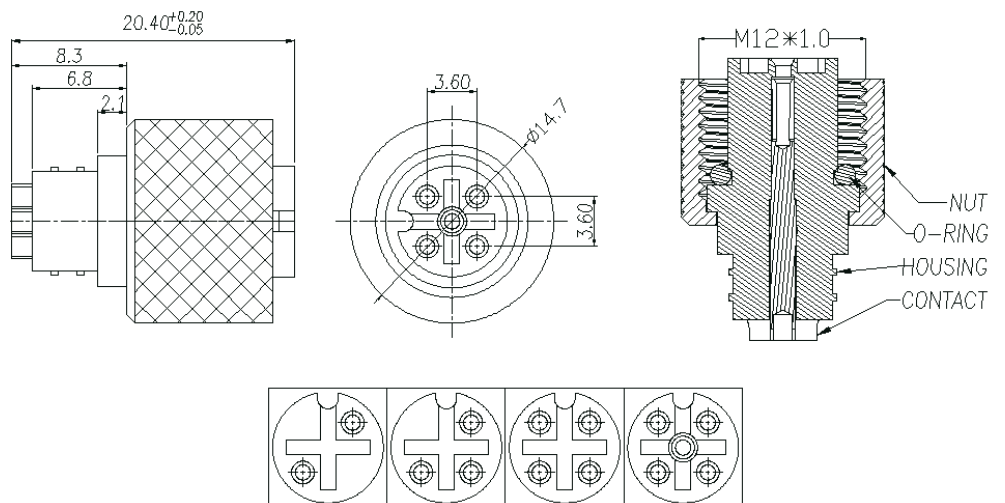
M12-068N

M12 · Cable End · Female · Screw · Overmolded Straight Solder



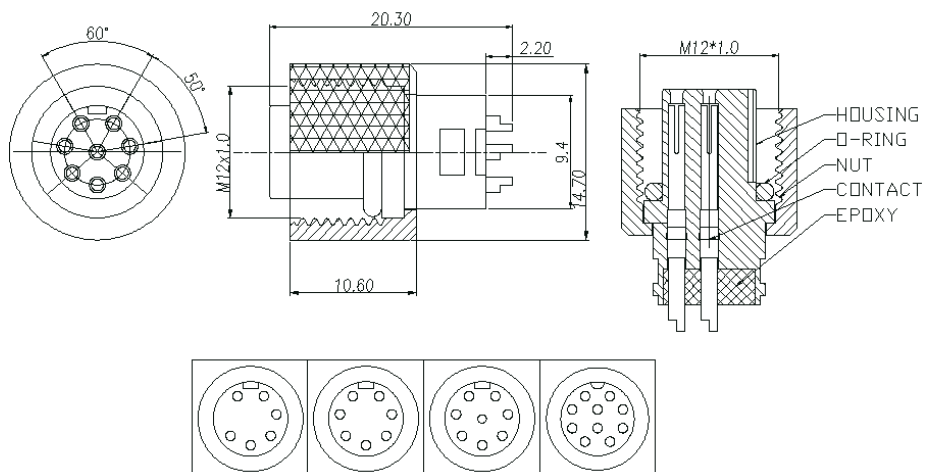
Specification :

- ▶ Rated current : 5A
- ▶ Rated Voltage : 125V
- ▶ Water proof : IPX7



M12-049N

M12 · Cable End · Female · Screw · Overmolded Straight Solder

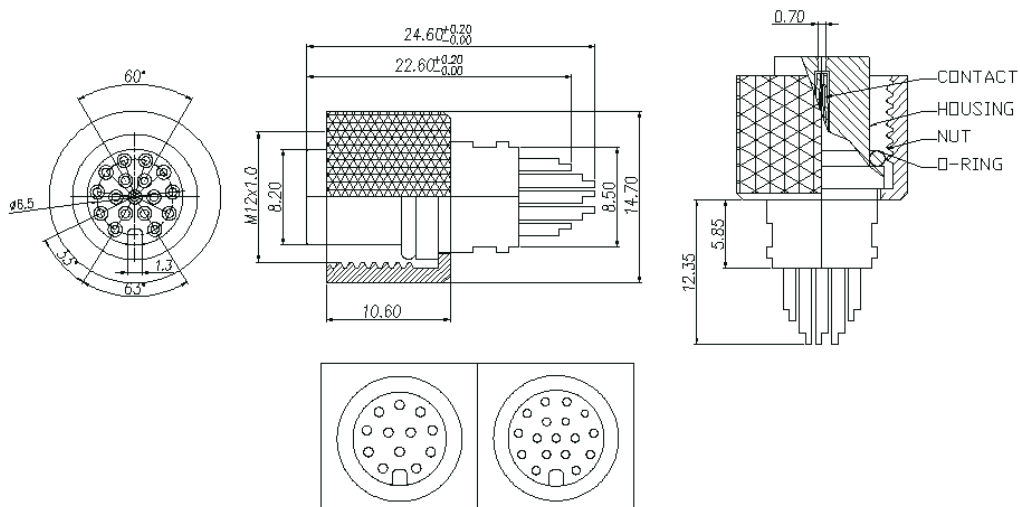


Specification :

- Rated current : 5A
- Rated Voltage : 125V
- Water proof : IPX7

⚡ M12-50N

M12 · Cable End · Female · Screw · Overmolded Straight Solder



Specification :

- Rated current : 1A
- Rated Voltage : 30V
- Water proof : IPX7

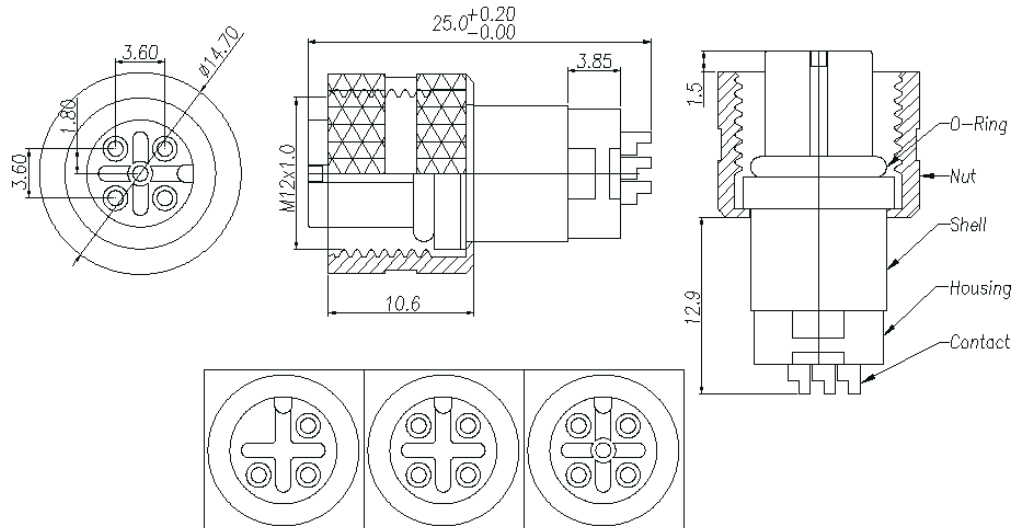
⚡ M12-051N

M12 · Cable End · Female · Screw · Overmolded Straight Solder · Ground



Specification :

- ▶ Rated current : 5A
- ▶ Rated Voltage : 125V
- ▶ Water proof : IPX7



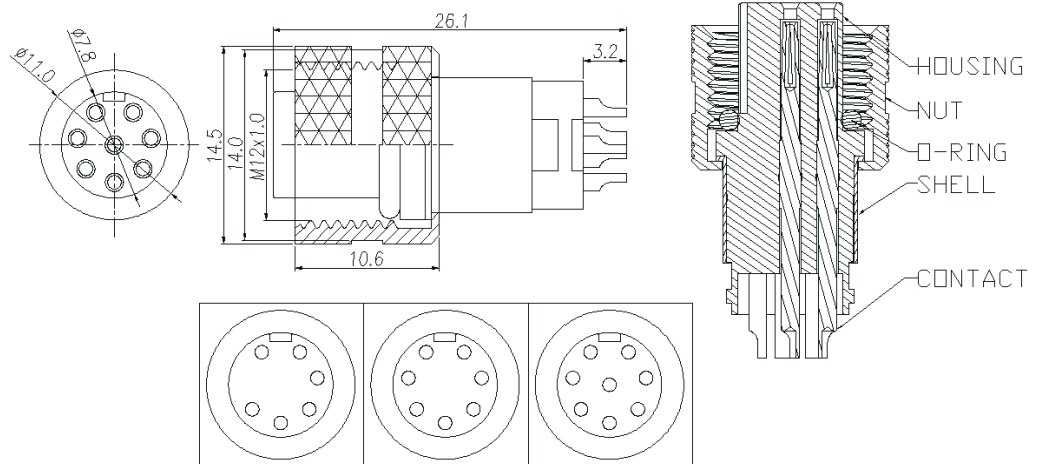
M12-052N

M12 · Cable End · Female · Screw · Overmolded Straight Solder · Ground



Specification :

- ▶ Rated current : 5A
- ▶ Rated Voltage : 125V
- ▶ Water proof : IPX7



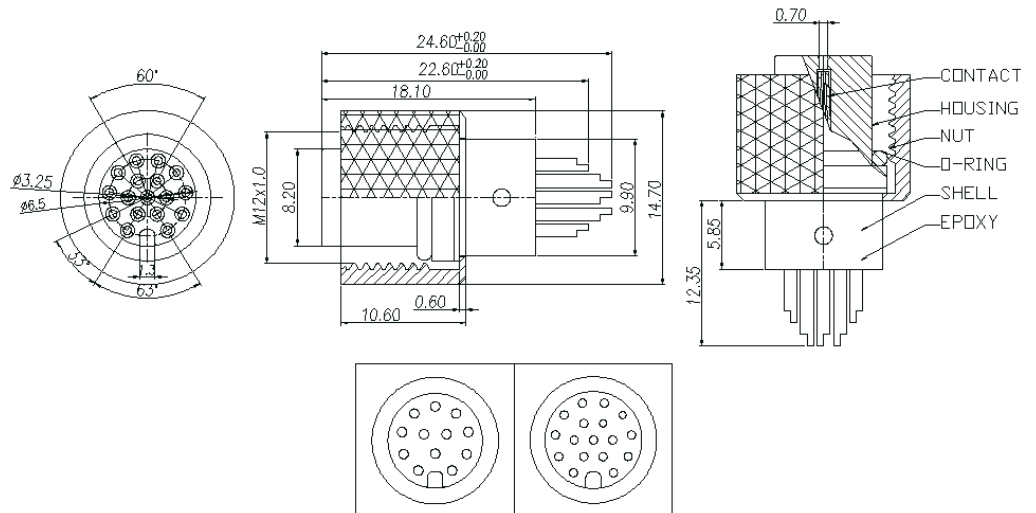
M12-053N

M12 · Cable End · Female · Screw · Overmolded Straight Solder · Ground



Specification :

- ▶ Rated current : 1A
- ▶ Rated Voltage : 30V
- ▶ Water proof : IPX7



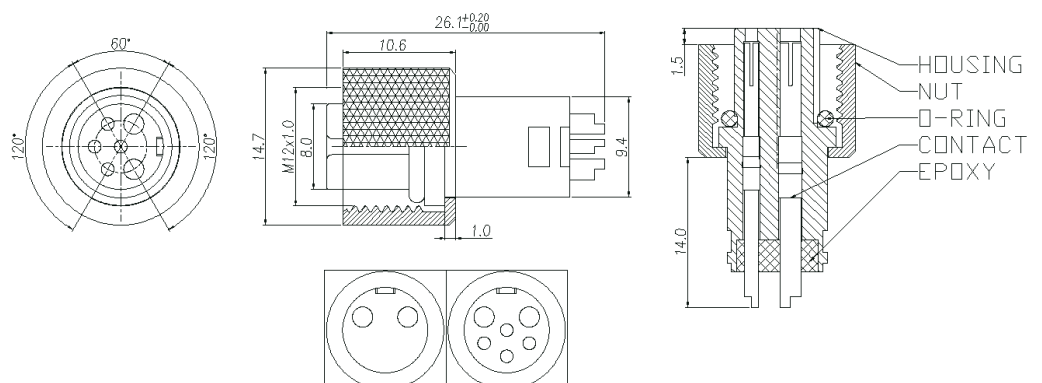
M12-054N

M12 · Cable End · Female · Screw · Overmolded Straight Solder



Specification :

- ▶ Rated current : 10A+3A
- ▶ Rated Voltage : 125V
- ▶ Water proof : IPX7



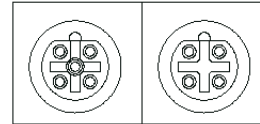
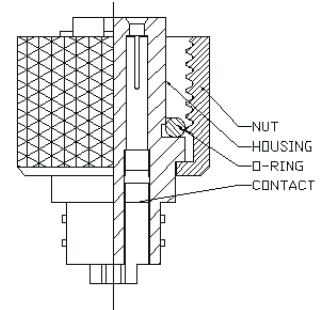
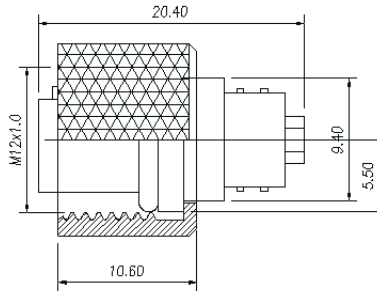
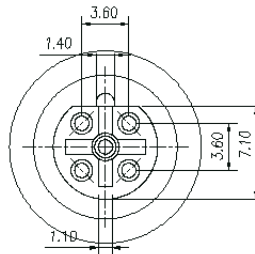
M12-055N

M12 · Cable End · Female · Screw · Overmolded Straight Solder · B Code



Specification :

- ▶ Rated current : 5A
- ▶ Rated Voltage : 125V
- ▶ Water proof : IPX7



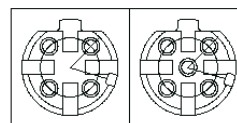
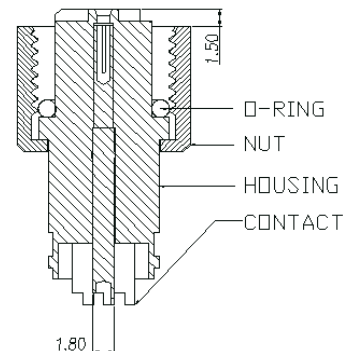
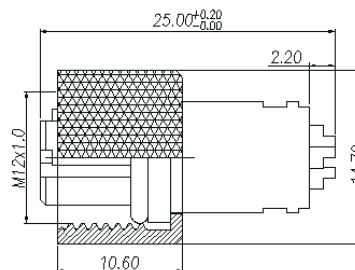
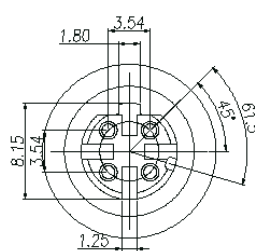
M12-065N

M12 · Cable End · Female · Screw · Overmolded Straight Solder · D Code



Specification :

- ▶ Rated current : 5A
- ▶ Rated Voltage : 125V
- ▶ Water proof : IPX7



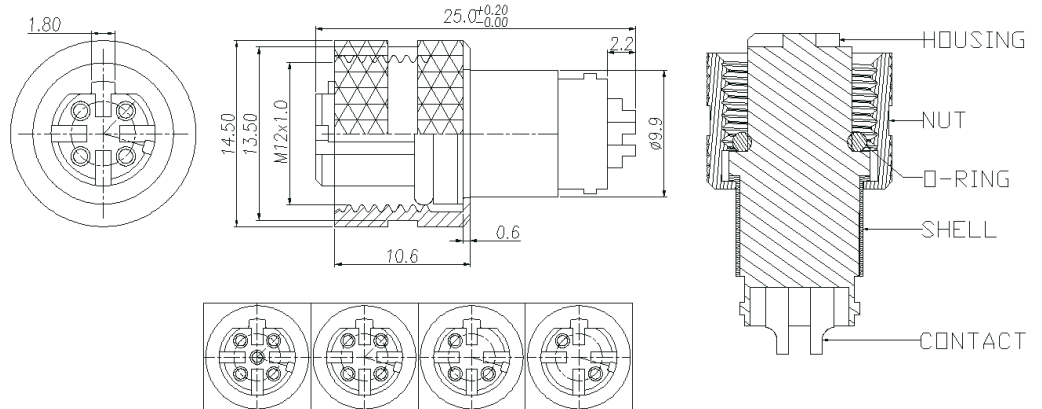
M12-069N

M12 · Cable End · Female · Screw · Overmolded Straight Solder · D Code Ground



Specification :

- ▶ Rated current : 5A
- ▶ Rated Voltage : 125V
- ▶ Water proof : IPX7



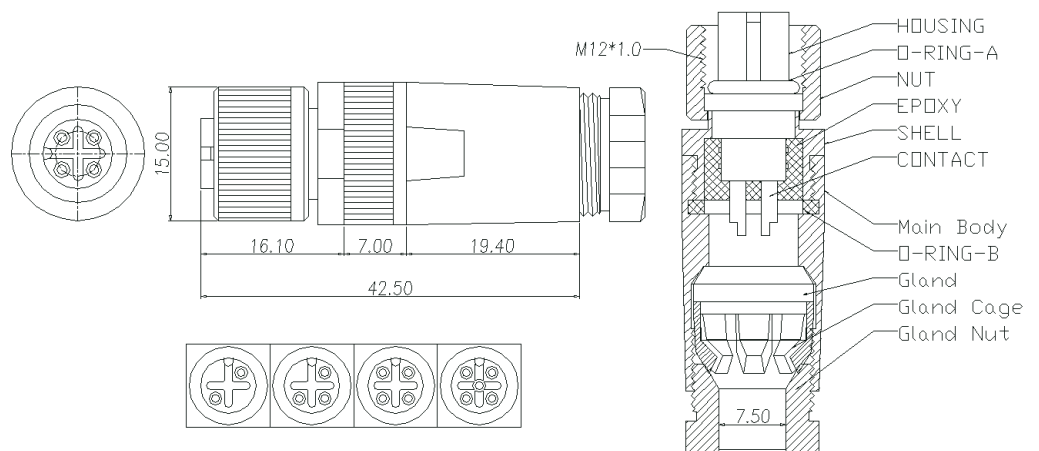
M12-070N

M12 · Cable End · Female · Screw · Assembly Solder



Specification :

- ▶ Rated current : 5A
- ▶ Rated Voltage : 125V
- ▶ Water proof : IPX7



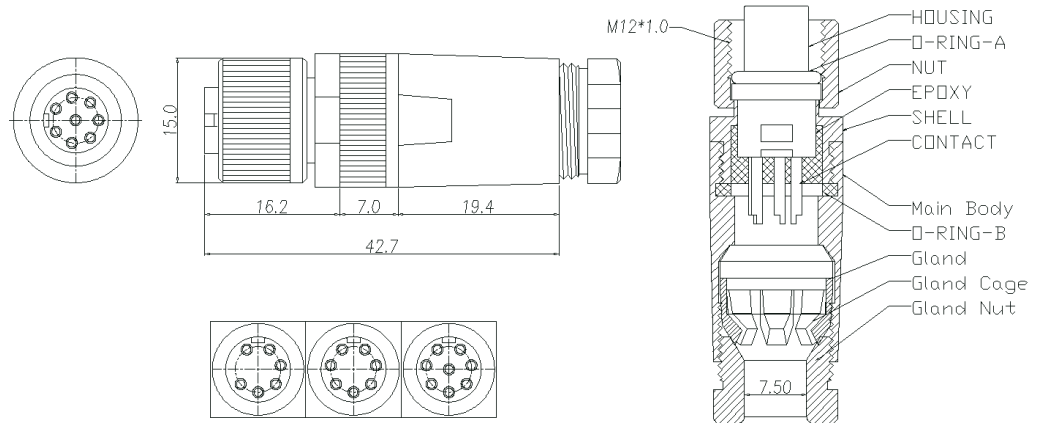
M12-056N

M12 · Cable End · Female · Screw · Assembly Solder



Specification :

- ▶ Rated current : 5A
- ▶ Rated Voltage : 125V
- ▶ Water proof : IPX7



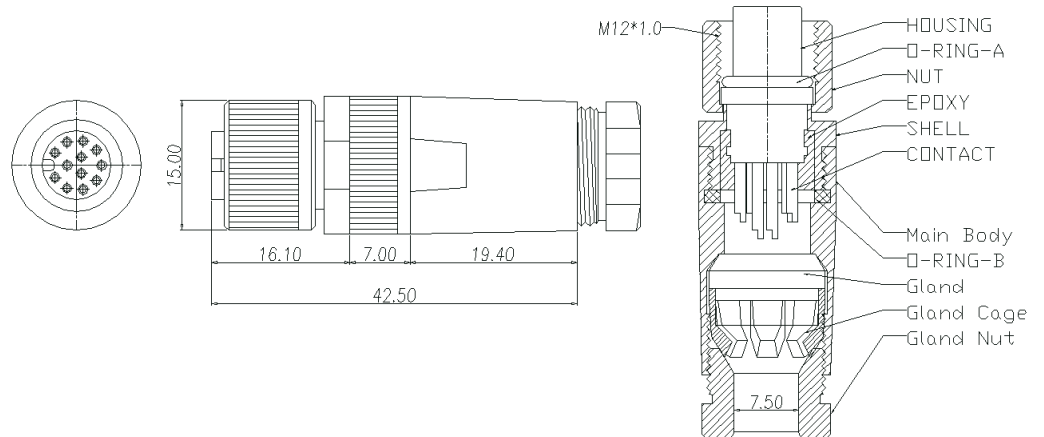
M12-057N

M12 · Cable End · Female · Screw · Assembly Solder



Specification :

- ▶ Rated current : 5A
- ▶ Rated Voltage : 125V
- ▶ Water proof : IPX7



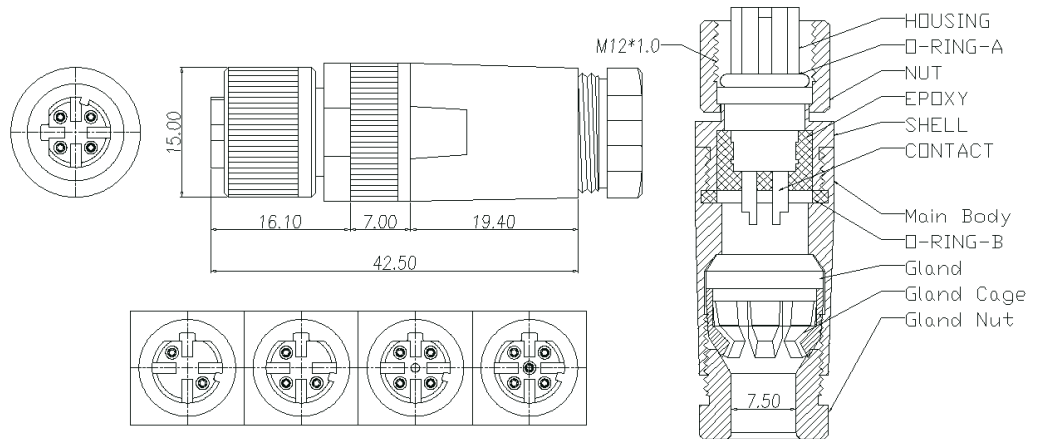
M12-058N

M12 · Cable End · Female · Screw · Assembly Solder · D Code



Specification :

- ▶ Rated current : 5A
- ▶ Rated Voltage : 125V
- ▶ Water proof : IPX7



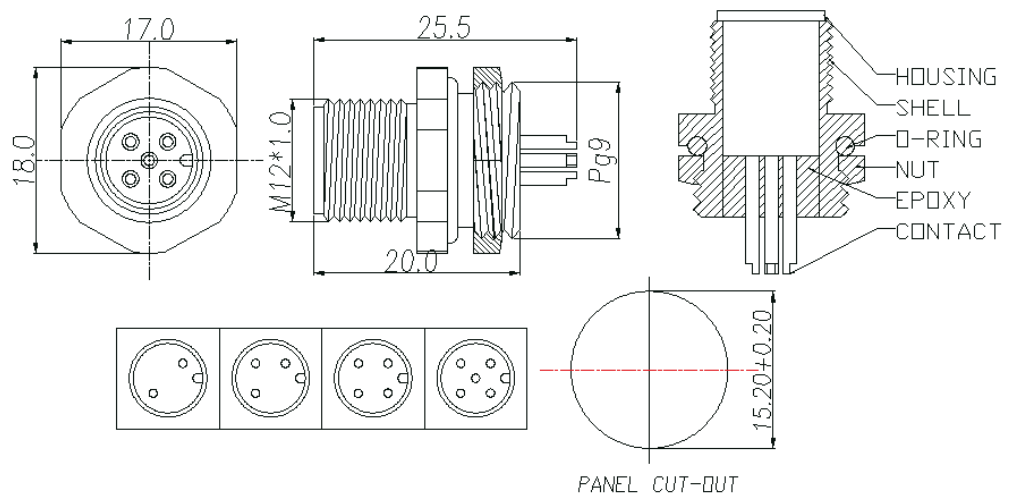
M12-071N

M12 · Panel End · Male · Screw · Rear Fastened Solder



Specification :

- ▶ Rated current : 5A
- ▶ Rated Voltage : 125V
- ▶ Water proof : IPX7



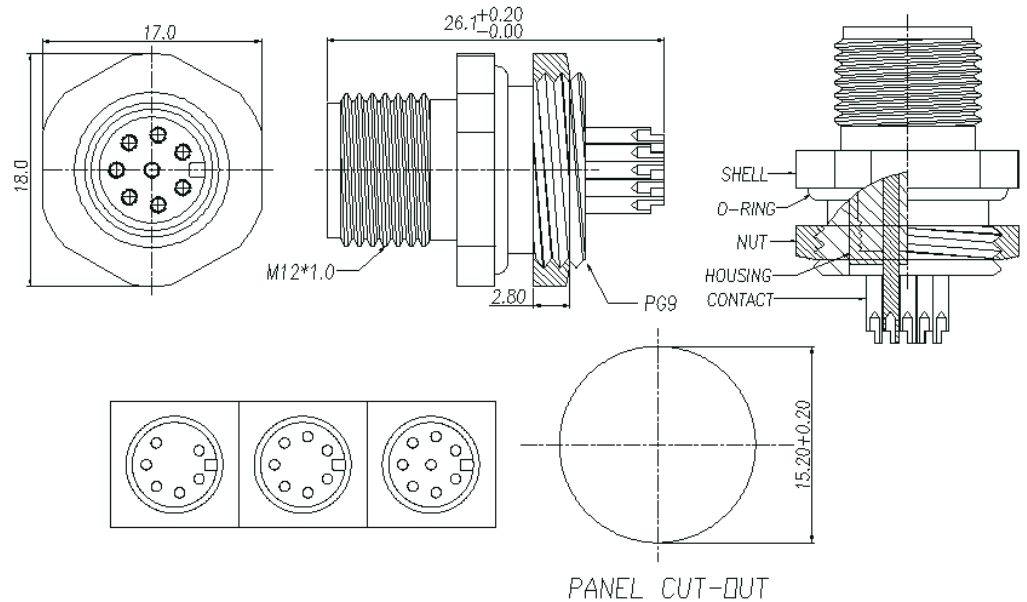
M12-046N

M12 · Panel End · Male · Screw · Rear Fastened Solder



Specification :

- ▶ Rated current : 5A
- ▶ Rated Voltage : 125V
- ▶ Water proof : IPX7



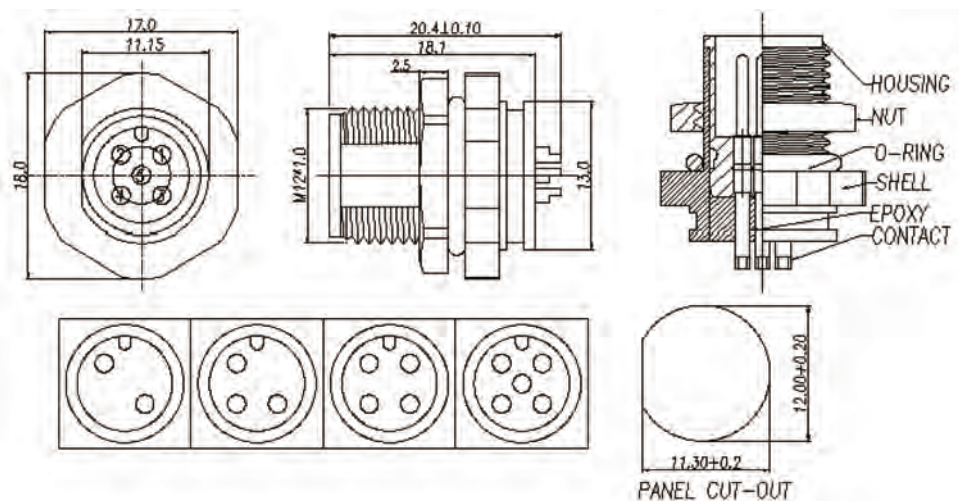
M12-047N

M12 · Panel End · Male · Screw · Front Fastened Solder



Specification :

- ▶ Rated current : 5A
- ▶ Rated Voltage : 125V
- ▶ Water proof : IPX7



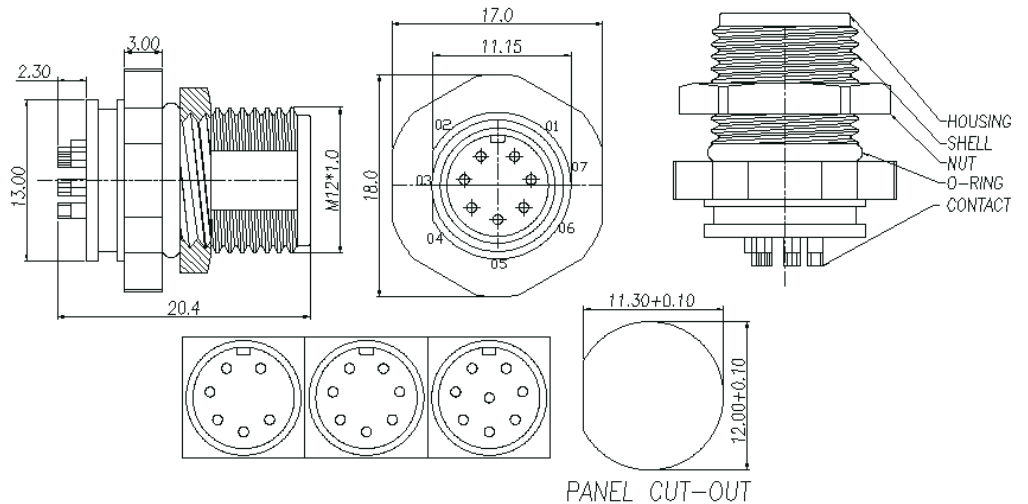
M12-041N

M12 · Panel End · Male · Screw · Front Fastened Solder



Specification :

- Rated current : 5A
- Rated Voltage : 125V
- Water proof : IPX7



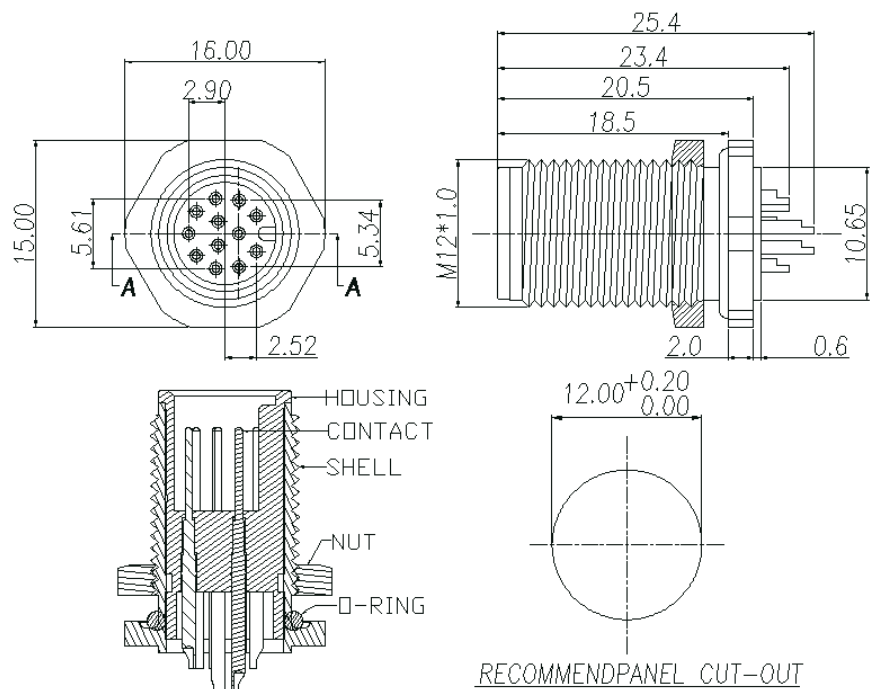
M12-042N

M12 · Panel End · Male · Screw · Front Fastened Solder



Specification :

- Rated current : 1A
- Rated Voltage : 30V
- Water proof : IPX7



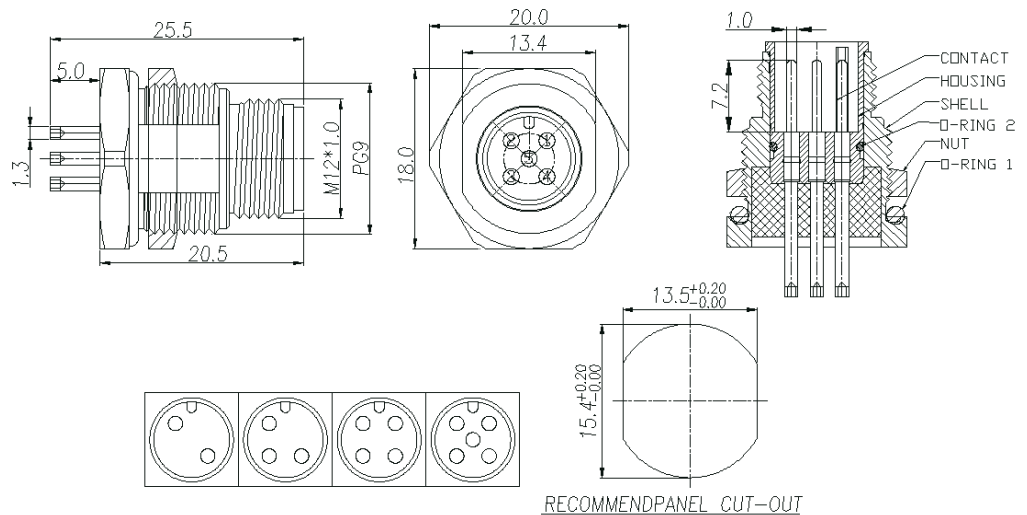
M12-043N

M12 · Panel End · Male · Screw · Front Fastened Solder



Specification :

- ▶ Rated current : 5A
- ▶ Rated Voltage : 125V
- ▶ Water proof : IPX7



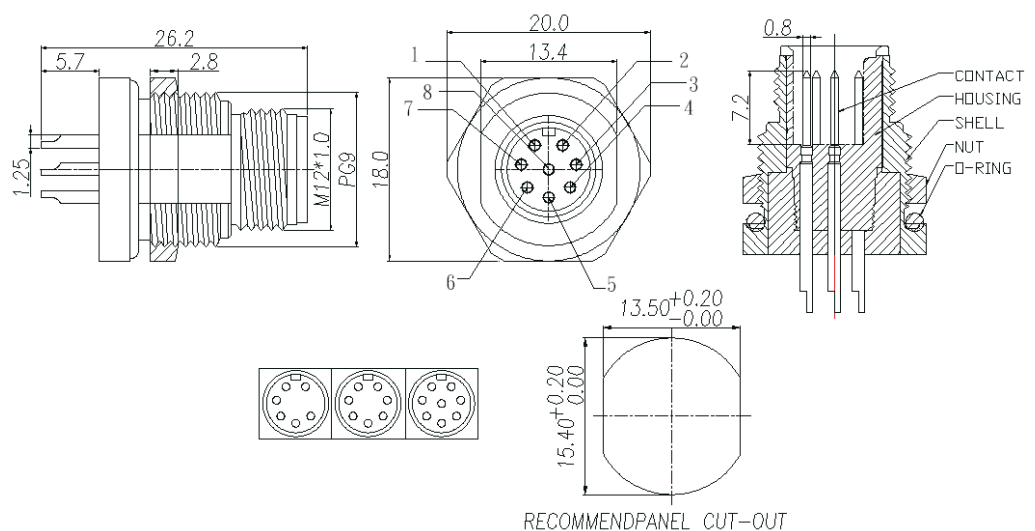
M12-044N

M12 · Panel End · Male · Screw · Front Fastened Solder



Specification :

- ▶ Rated current : 5A
- ▶ Rated Voltage : 125V
- ▶ Water proof : IPX7



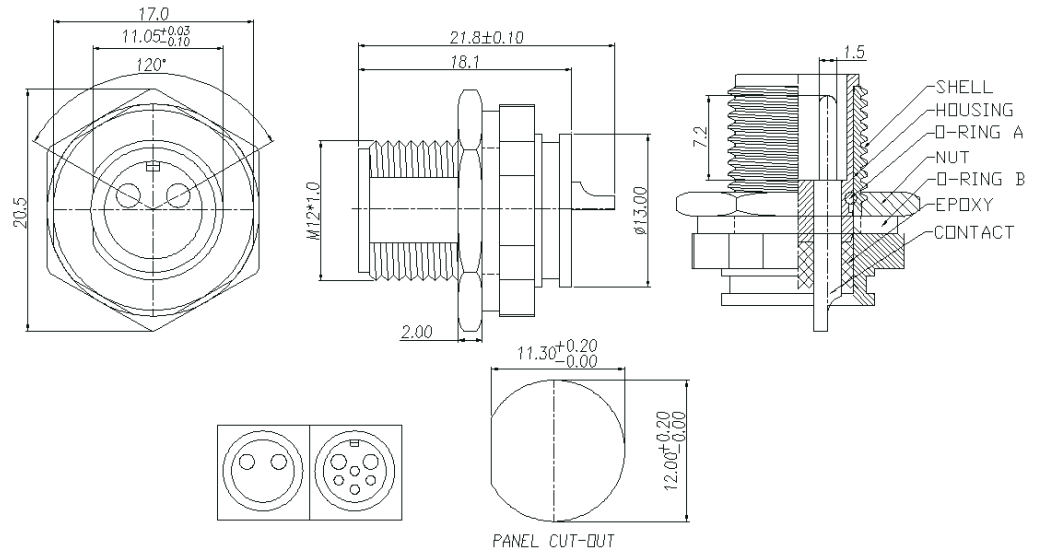
M12-045N

M12 · Panel End · Male · Screw · Front Fastened Solder



Specification :

- ▶ Rated current : 10A
- ▶ Rated Voltage : 125V
- ▶ Water proof : IPX7



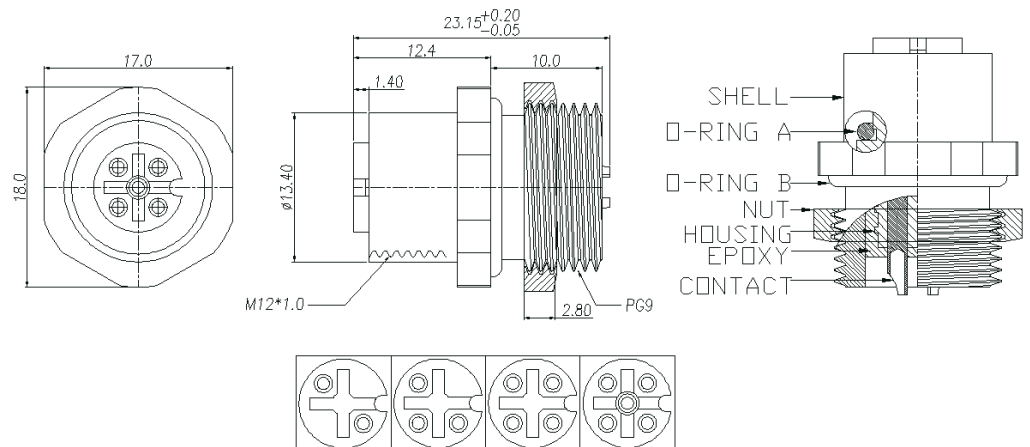
M12-048N

M12 · Panel End · Female · Screw · Rear Fastened Solder



Specification :

- ▶ Rated current : 5A
- ▶ Rated Voltage : 125V
- ▶ Water proof : IPX7



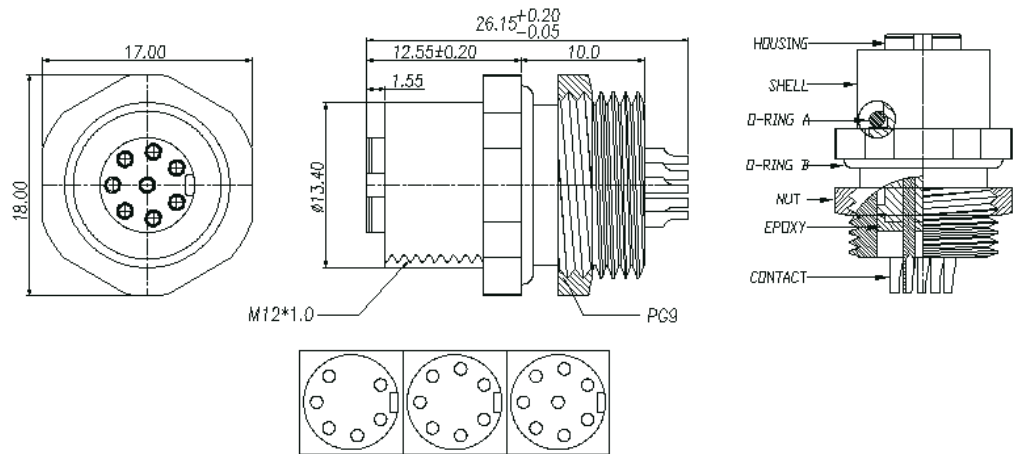
M12-062N

M12 · Panel End · Female · Screw · Rear Fastened Solder



Specification :

- ▶ Rated current : 5A
- ▶ Rated Voltage : 125V
- ▶ Water proof : IPX7



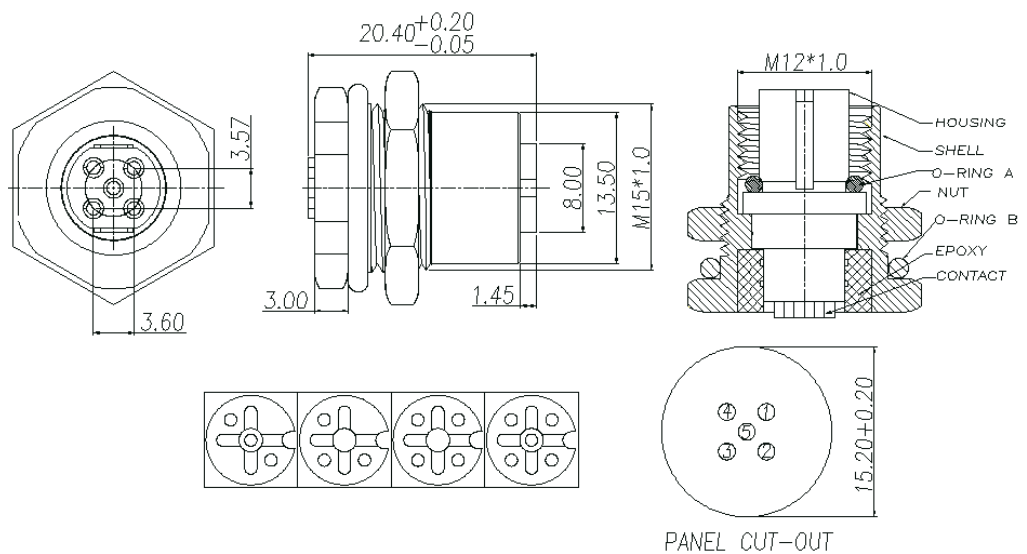
M12-063N

M12 · Panel End · Female · Screw · Front Fastened Solder



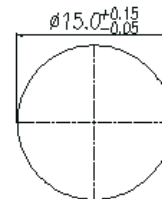
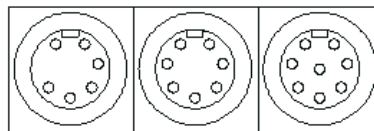
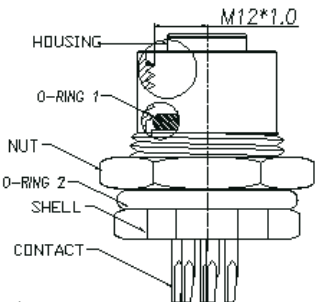
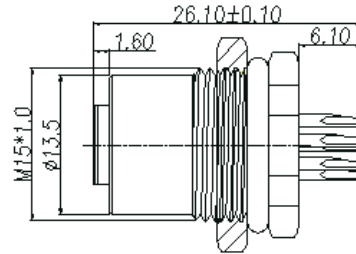
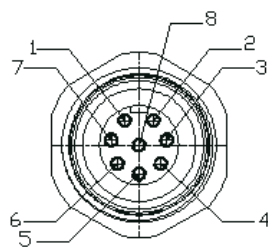
Specification :

- ▶ Rated current : 5A
- ▶ Rated Voltage : 125V
- ▶ Water proof : IPX7



M12-059N

M12 · Panel End · Female · Screw · Front Fastened Solder



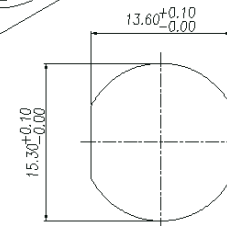
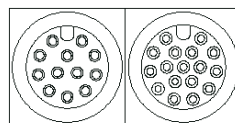
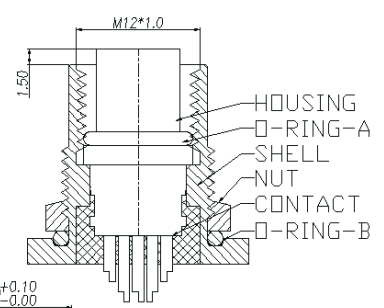
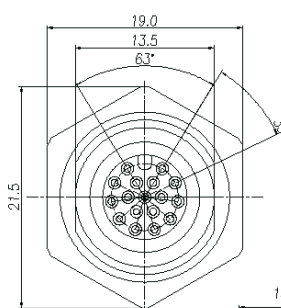
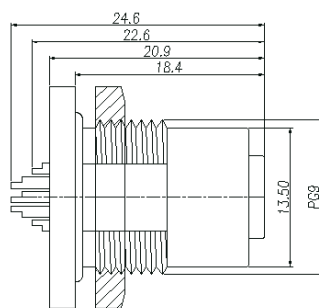
PANEL CUT-OUT

Specification :

- ▶ Rated current : 5A
- ▶ Rated Voltage : 125V
- ▶ Water proof : IPX7

M12-060N

M12 · Panel End · Female · Screw · Front Fastened Solder



RECOMMEND PANEL CUT-OUT

Specification :

- ▶ Rated current : 1A
- ▶ Rated Voltage : 30V
- ▶ Water proof : IPX7

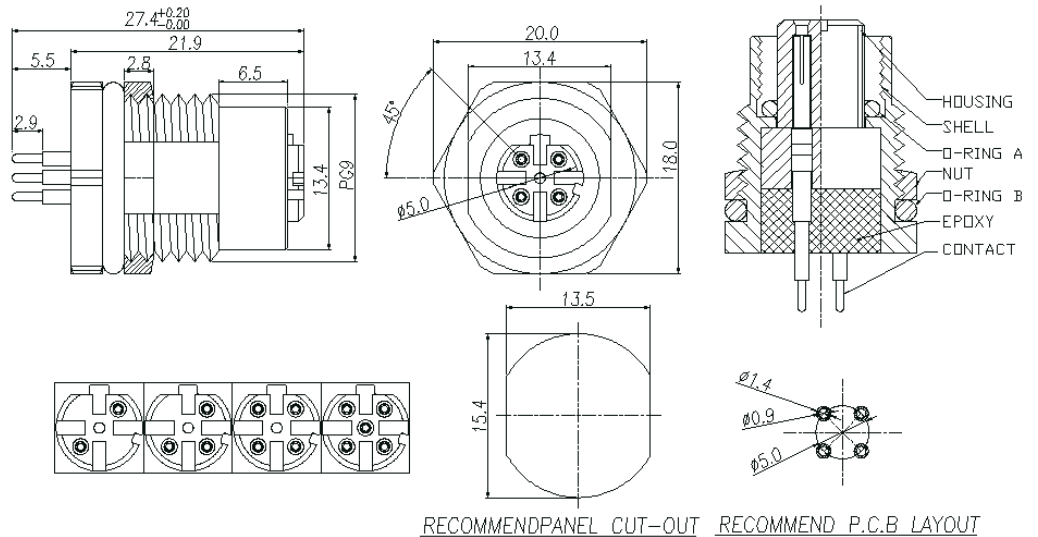
M12-061N

M12 · Panel End · Female · Screw · Front Fastened 90° PCB



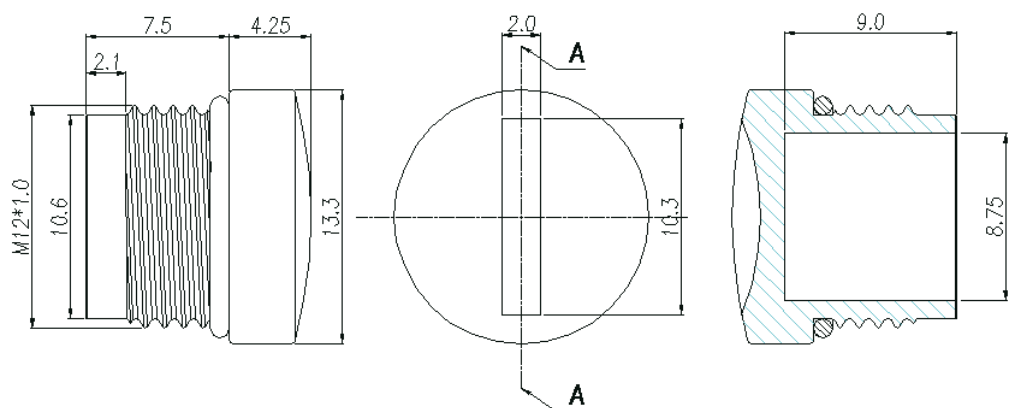
Specification :

- ▶ Rated current : 5A
- ▶ Rated Voltage : 125V
- ▶ Water proof : IPX7



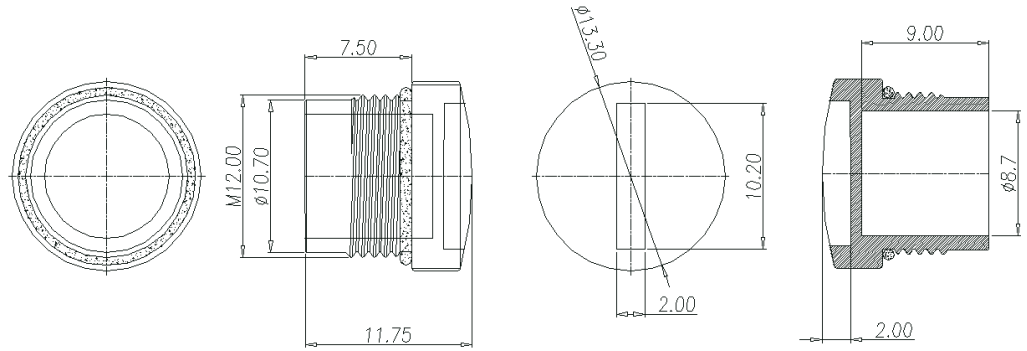
M12-072N

M12 · Accessories · Cap(Metal) w/O-ring



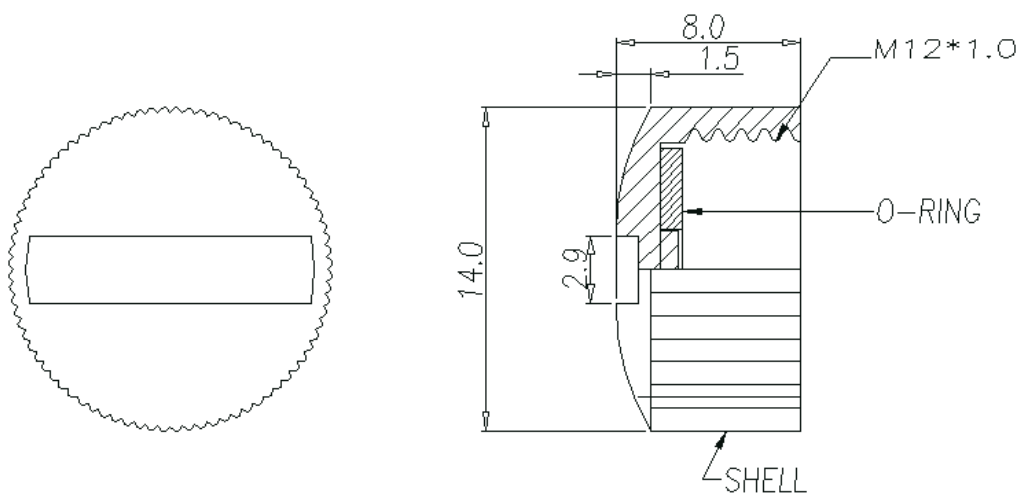
M12-101N

M12 · Accessories · Cap(Plastic) w/O-ring



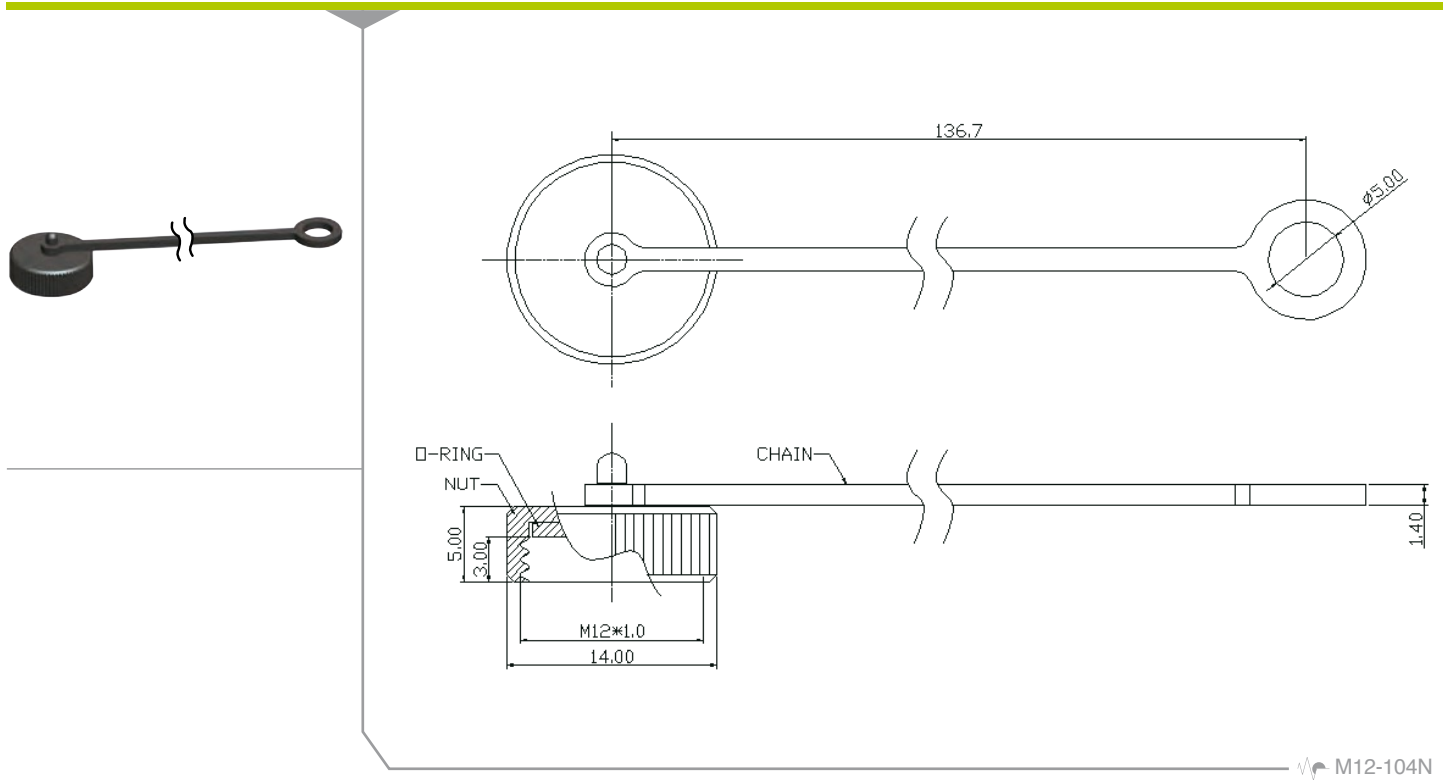
M12-102N

M12 · Accessories · Cap(Plastic) w/O-ring



M12-103N

M12 · Accessories · Cap(Plastic) w/O-ring, Chain(Plastic)

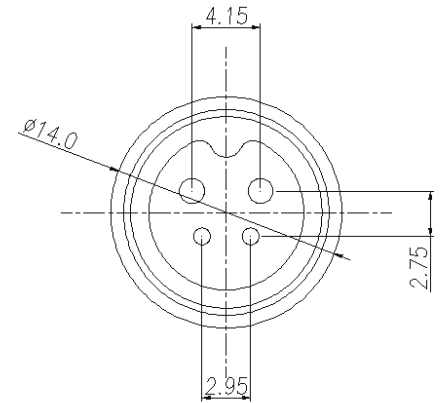
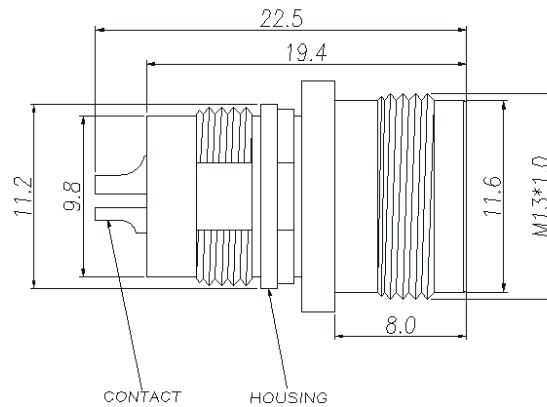


M13 · Cable End · Male · Screw · Overmolded Straight Solder



Specification :

- ▶ Rated current : 10A + 3A
- ▶ Rated Voltage : 125V
- ▶ Water proof : IPX7



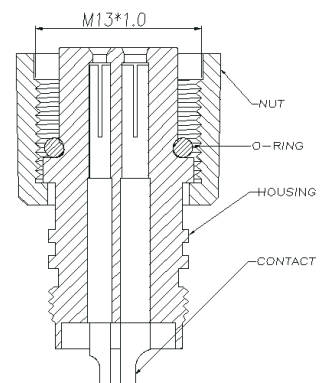
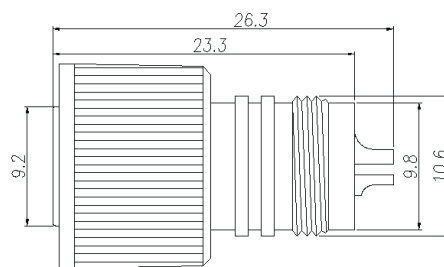
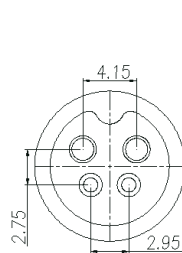
M13-089N

M13 · Cable End · Female · Screw · Overmolded Straight Solder



Specification :

- ▶ Rated current : 10A + 3A
- ▶ Rated Voltage : 125V
- ▶ Water proof : IPx7



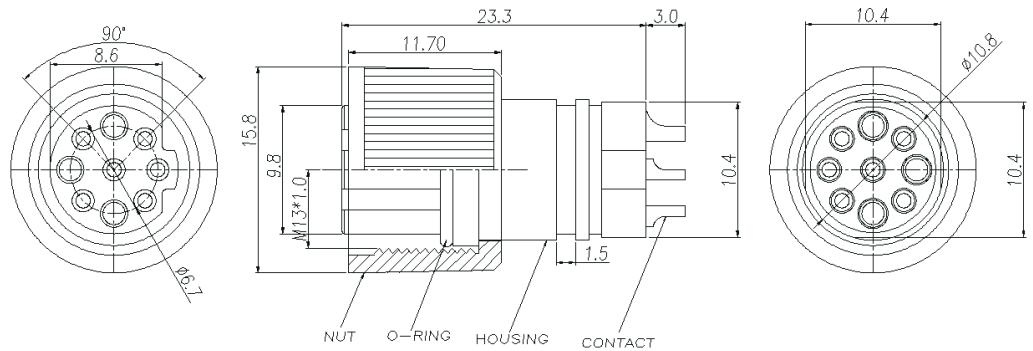
M13-091N

M13 · Cable End · Female · Screw · Overmolded Straight Solder



Specification :

- Rated current : 9A + 3A
- Rated Voltage : 125V
- Water proof : IPX7



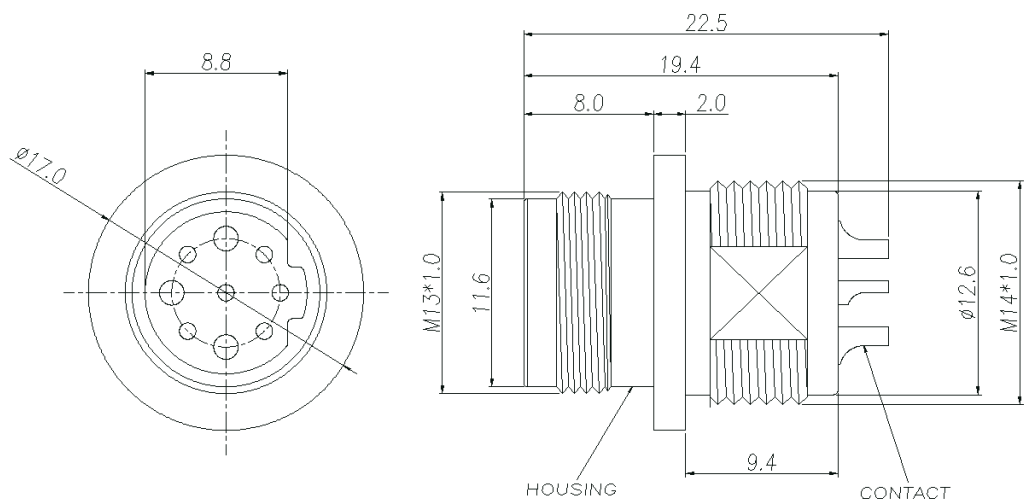
M13-092N

M13 · Panel End · Male · Screw · Rear Fastened Solder



Specification :

- Rated current : 9A + 3A
- Rated Voltage : 125V
- Water proof : IPX7



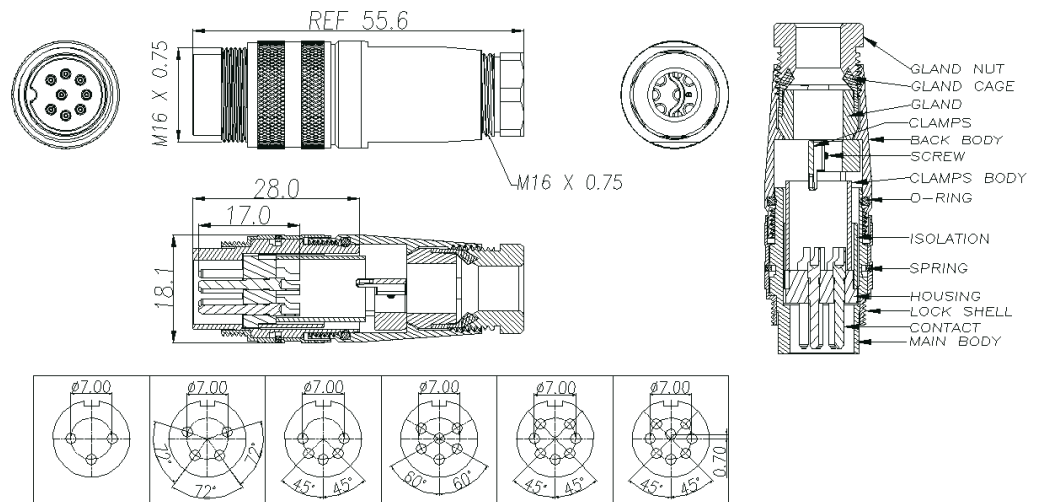
M13-090N

M16 · Cable End · Male · Screw · Assembly Solder



Specification :

- ▶ Rated current : 5A
- ▶ Rated Voltage : 250V
- ▶ Water proof : IPX7



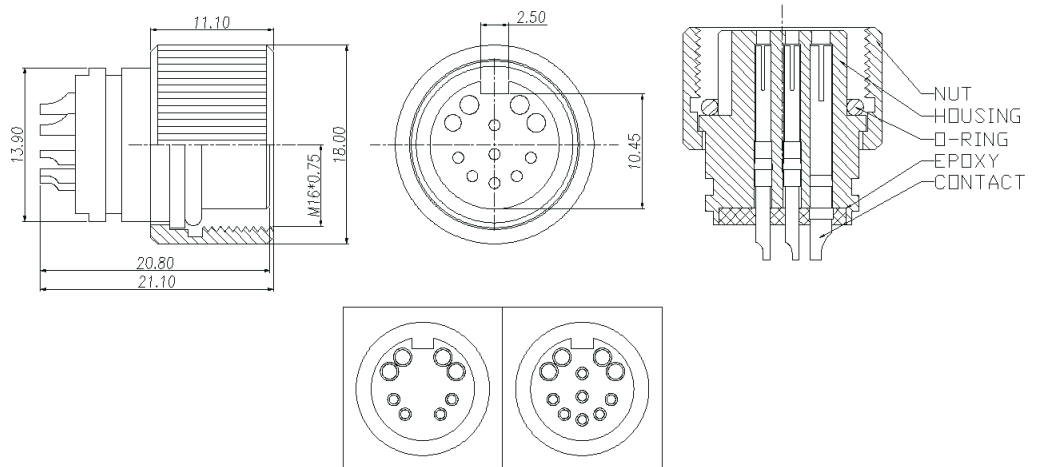
M16-095N

M16 · Cable End · Female · Screw · Overmolded Straight Solder



Specification :

- ▶ Rated current : 10A+1A
- ▶ Rated Voltage : 250V+125V
- ▶ Water proof : IPX7



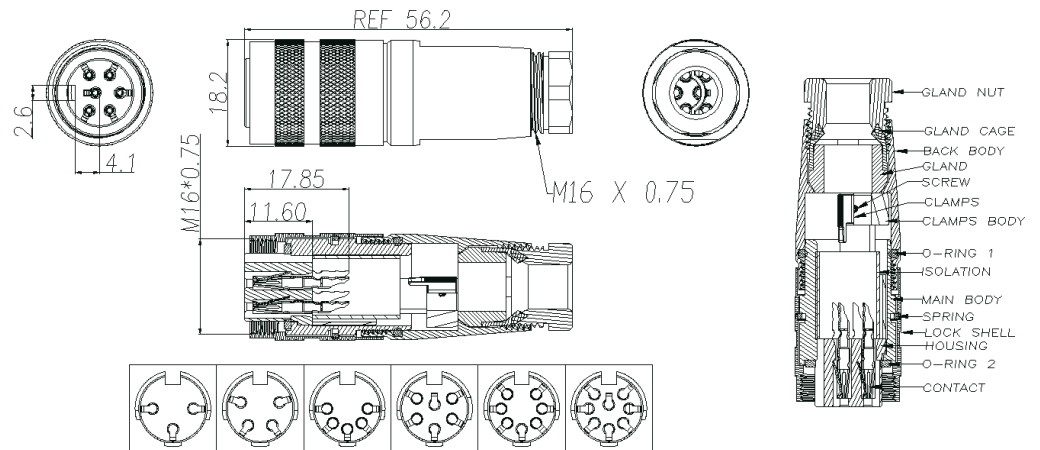
M16-094N

M16 · Cable End · Female · Screw · Assembly Solder



Specification :

- ▶ Rated current : 5A
- ▶ Rated Voltage : 250V
- ▶ Water proof : IPX7



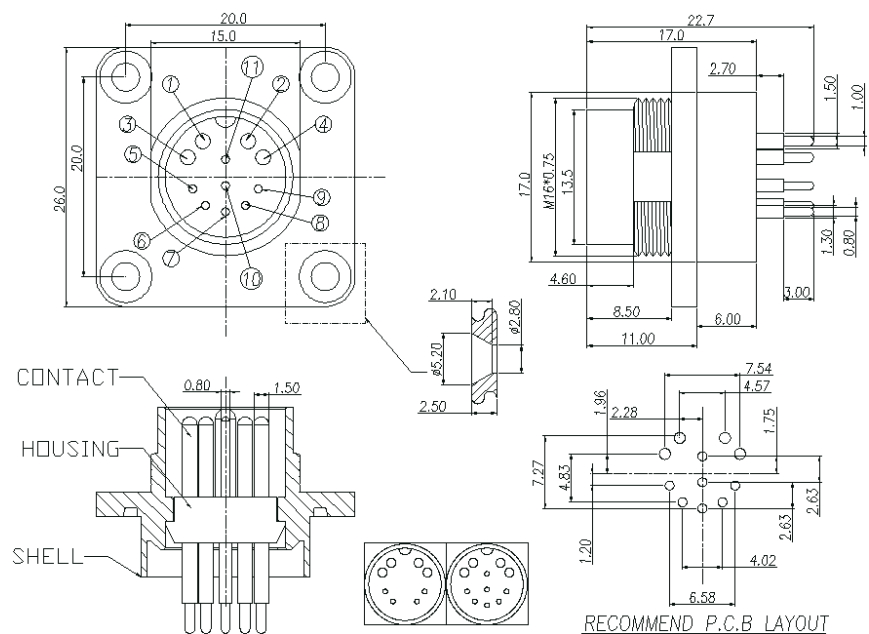
M16-096N

M16 · Panel End · Male · Screw · Front Fastened 180° PCB



Specification :

- ▶ Rated current : 10A+1A
- ▶ Rated Voltage : 250V+125V
- ▶ Water proof : IPX7



RECOMMEND P.C.B LAYOUT

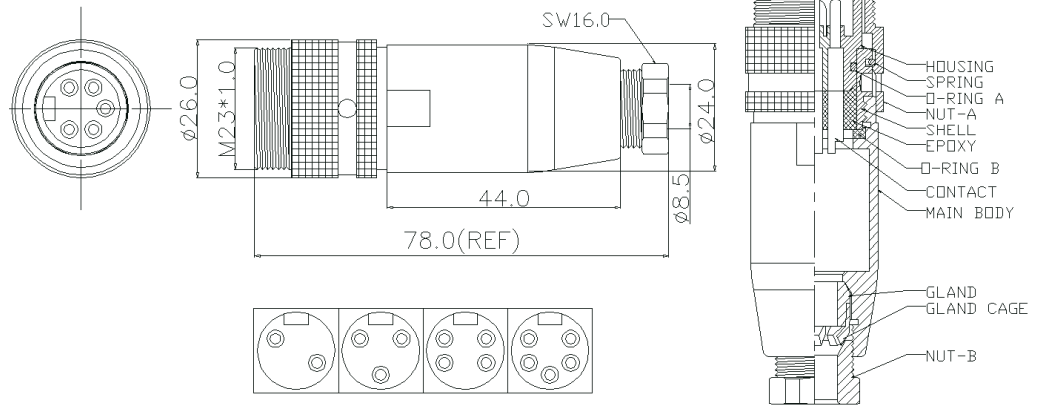
M16-093N

M23 · Cable End · Male · Screw · Assembly Solder



Specification :

- ▶ Rated current : 20A
- ▶ Rated Voltage : 250V
- ▶ Water proof : IPX7



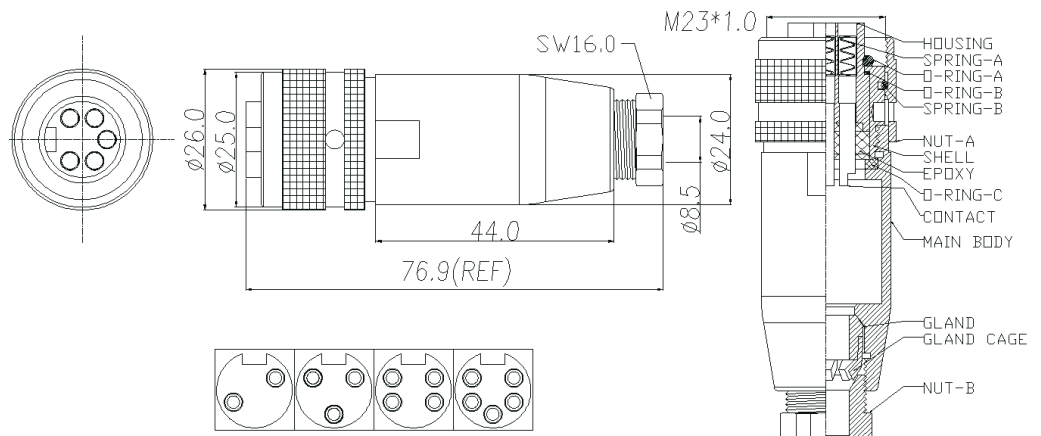
M23-075N

M23 · Cable End · Female · Screw · Assembly Solder



Specification :

- ▶ Rated current : 20A
- ▶ Rated Voltage : 250V
- ▶ Water proof : IPX7



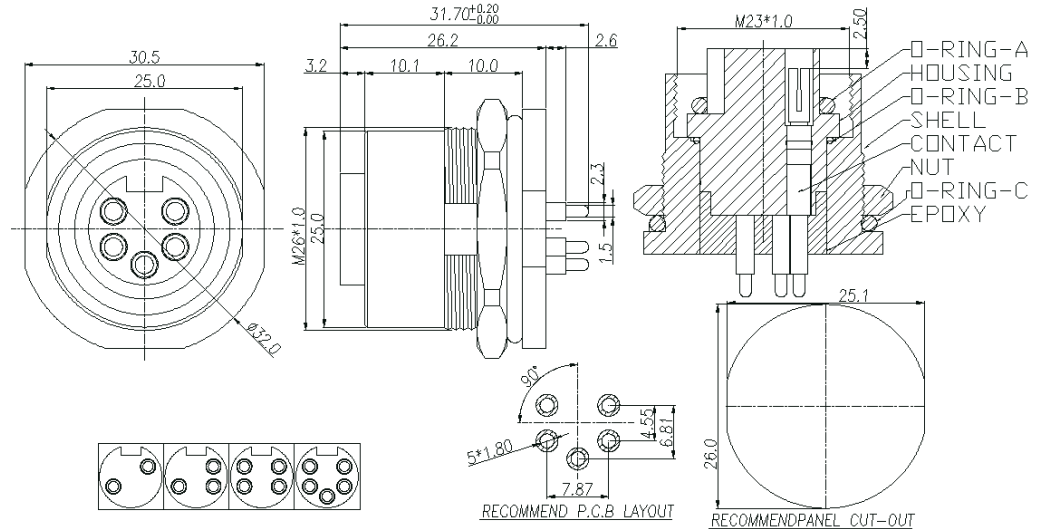
M23-079N

M23 · Panel End · Female · Screw · Front Fastened 180° PCB



Specification :

- ▶ Rated current : 5A
- ▶ Rated Voltage : 125V
- ▶ Water proof : IPX7



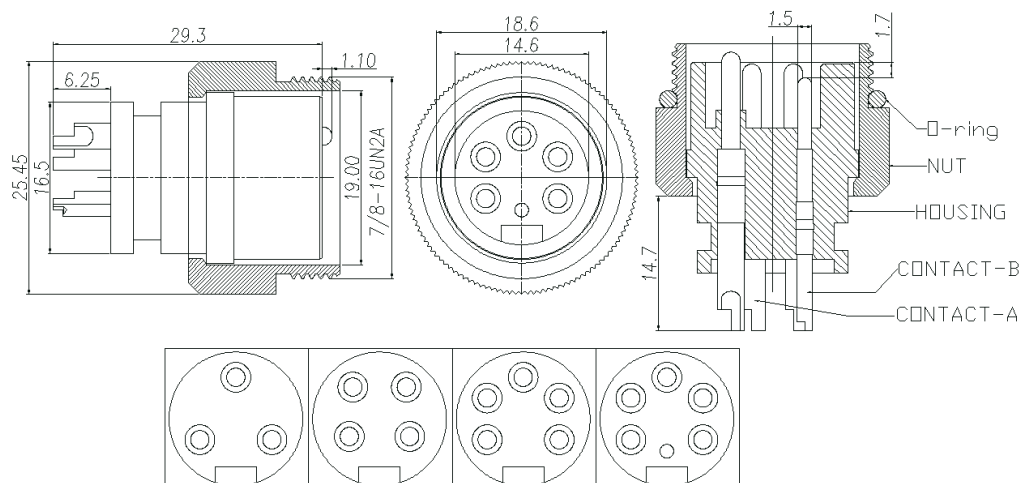
M23-078N

7/8-16UN-2A · Cable End · Male · Screw · Overmolded Straight Solder



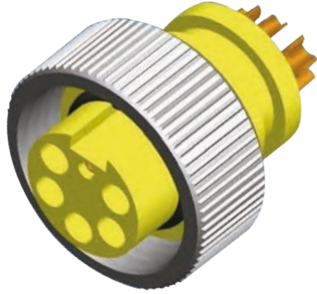
Specification :

- ▶ Rated current : 20A
- ▶ Rated Voltage : 125V
- ▶ Water proof : IPX7



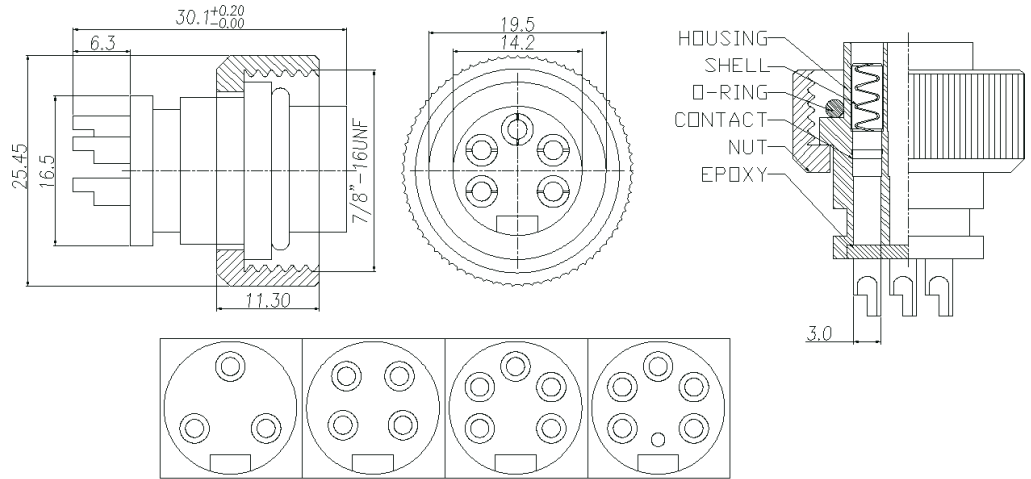
M23-073N

7/8-16UN-2A · Cable End · Female · Screw · Overmolded Straight Solder



Specification :

- ▶ Rated current : 20A
- ▶ Rated Voltage : 125V
- ▶ Water proof : IPX7



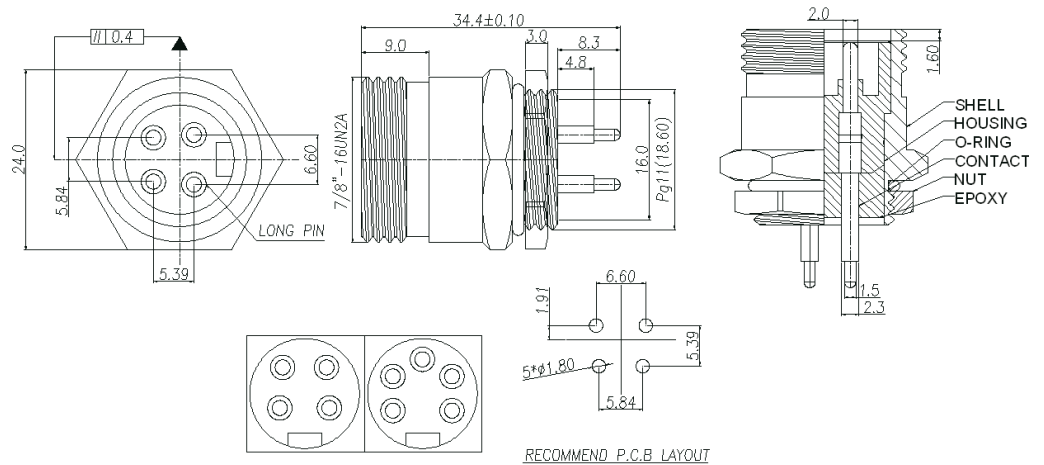
M23-076N

7/8-16UN-2A · Panel End · Male · Screw · Front Fastened 180° PCB



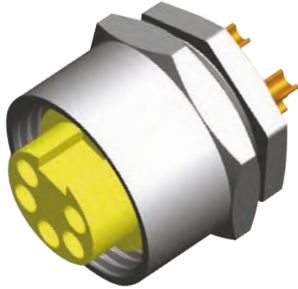
Specification :

- ▶ Rated current : 20A
- ▶ Rated Voltage : 125V
- ▶ Water proof : IPX7



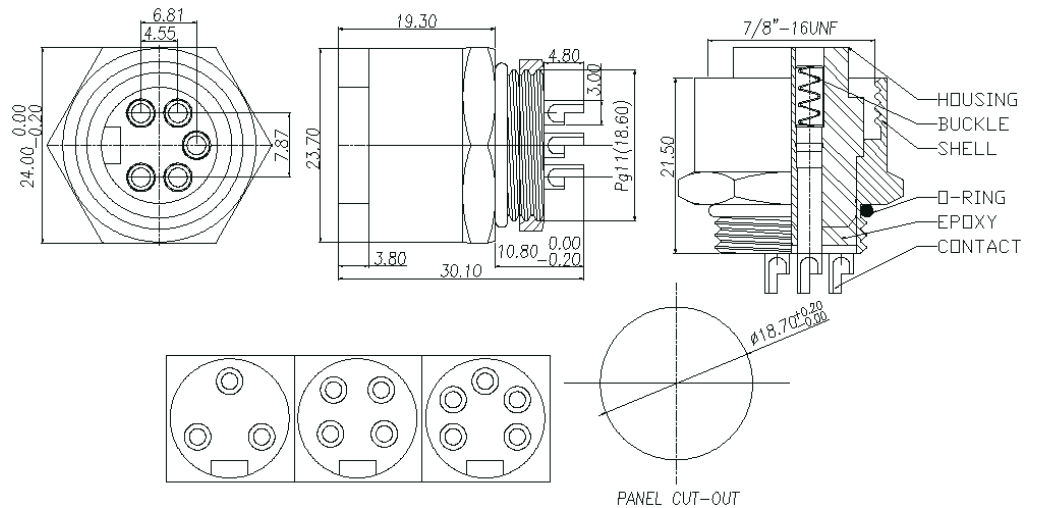
M23-074N

7/8-16UN-2A · Panel End · Female · Screw · Rear Fastened 180° PCB



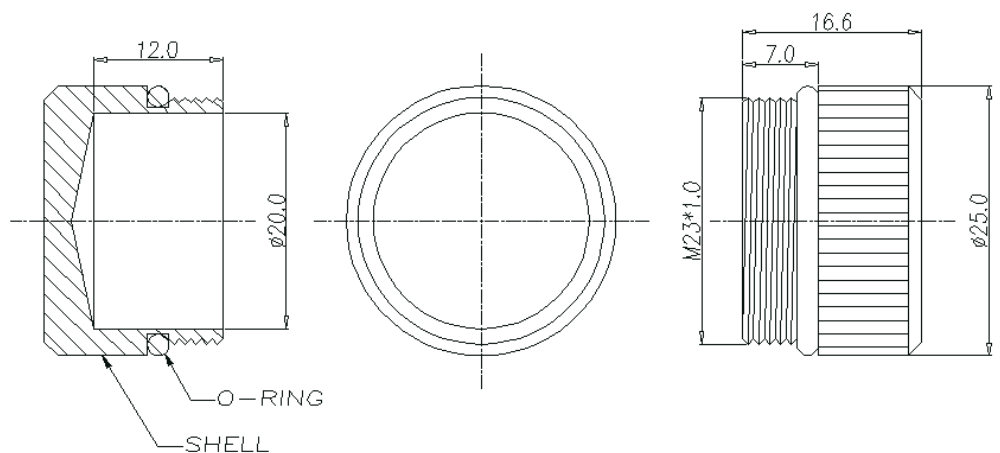
Specification :

- ▶ Rated current : 20A
- ▶ Rated Voltage : 250V
- ▶ Water proof : IPX7



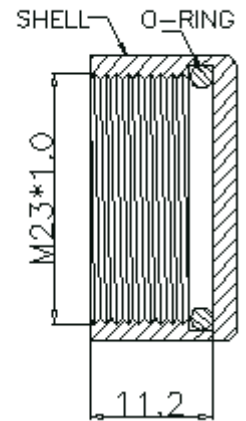
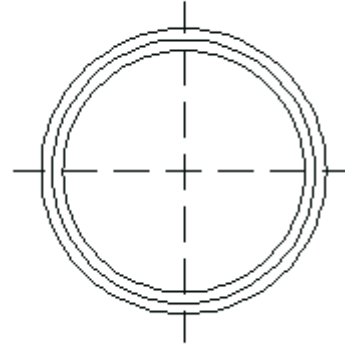
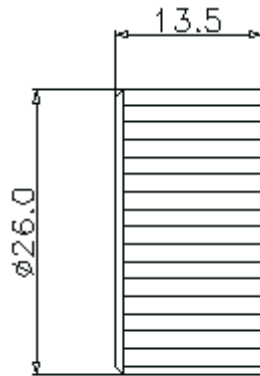
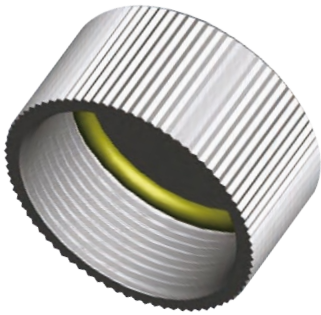
M23-077N

M23 · Accessories · Cap(Metal) w/O-ring



M23-105N

M23 · Accessories · Cap(Metal) w/O-ring



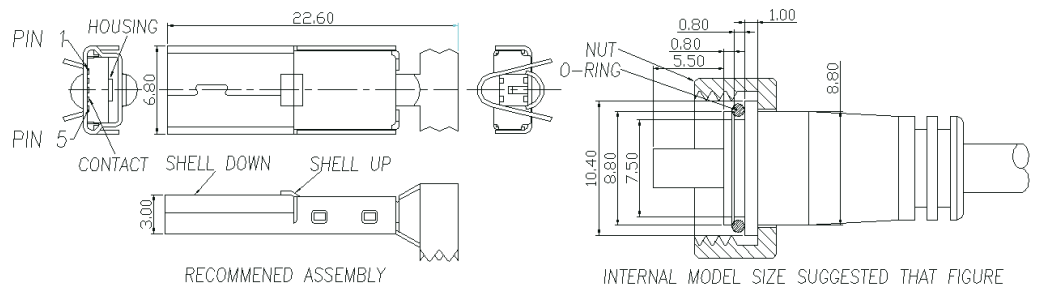
M23-106N

Mini USB · Cable End · Male · Screw · Overmolded Straight Solder



Specification :

- Rated current :
1A AT 250V AC
- Contact resistance :
50MΩ OHM MAX.
- Insulation resistance :
100MΩ OHMMIN
- Water proof : IPX7



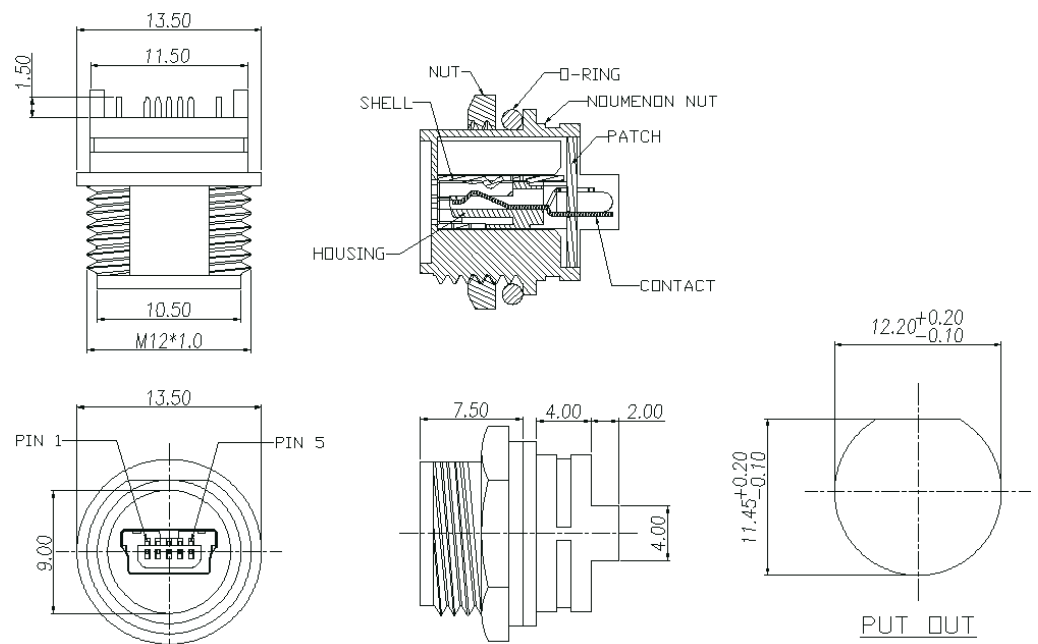
USB-080N

Mini USB · Panel End · Female · Screw · Front Fastened Solder



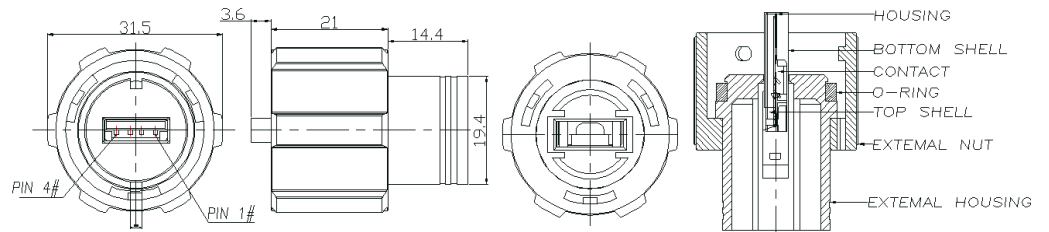
Specification :

- Rated current :
1A AT 250V AC
- Contact resistance :
50MΩ OHM MAX.
- Insulation resistance :
100MΩ OHMMIN
- Water proof : IPX7



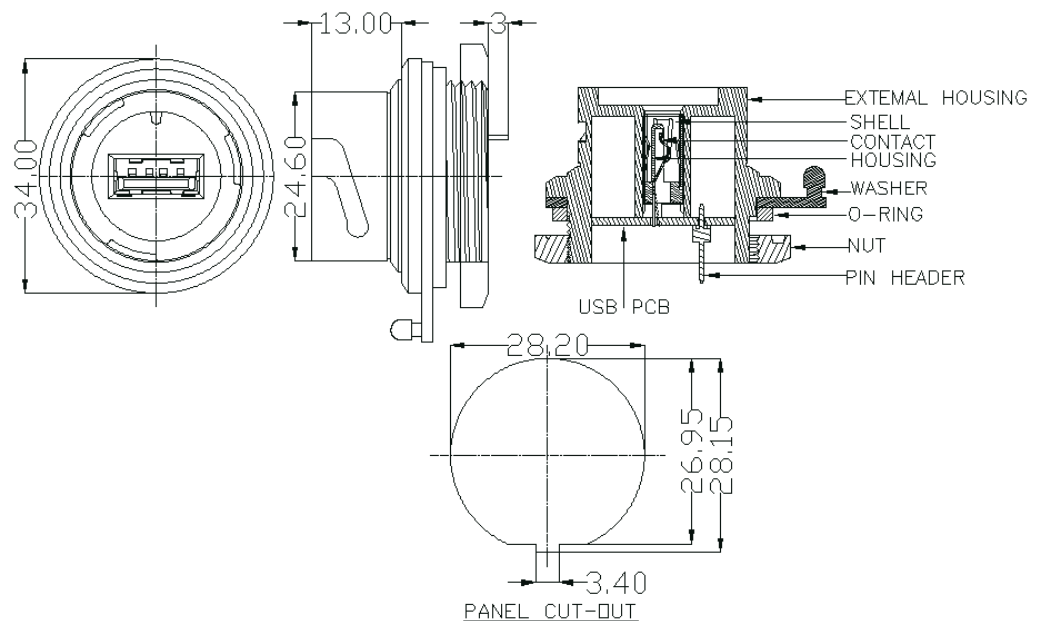
USB-081N

USB A · Cable End · Male · Bayonet · Overmolded Straight Solder



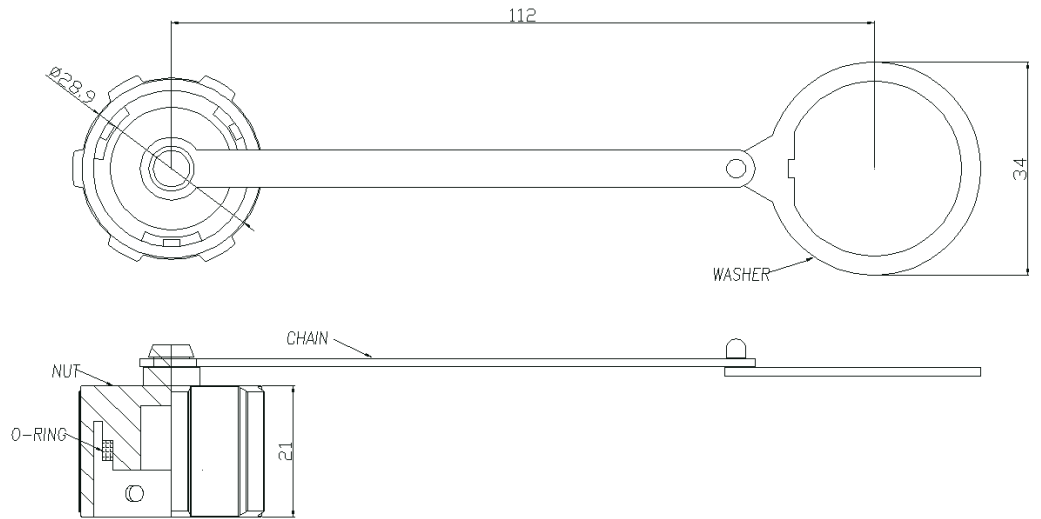
USB-082N

USB A · Panel End · Female · Bayonet · Rear Fastened Solder



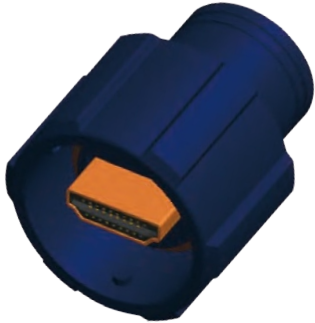
USB-083N

USB A · Accessories · Cap(Plastic) w/O-ring, Chain(Plastic)



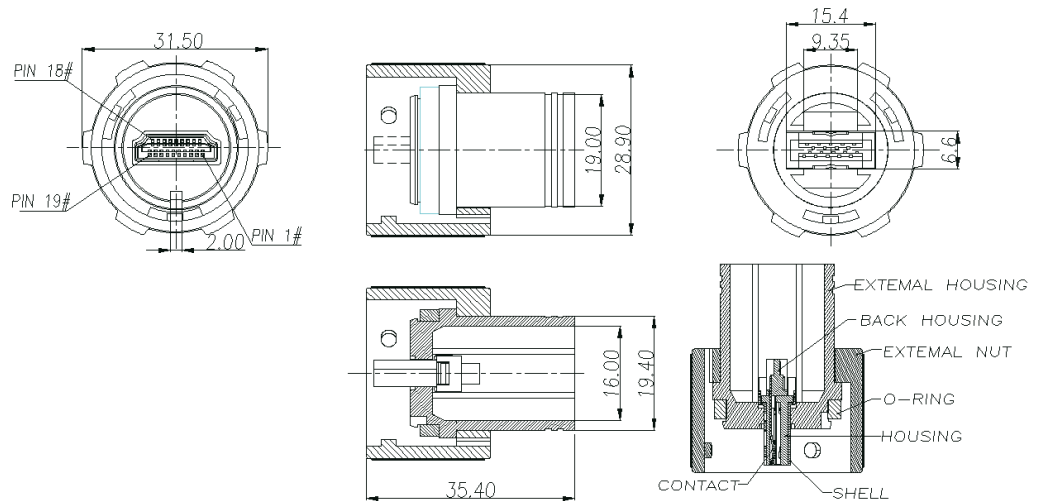
USB-107N

HDMI A · Cable End · Male · Bayonet · Overmolded Straight Solder



Specification :

- Water proof : IPX7



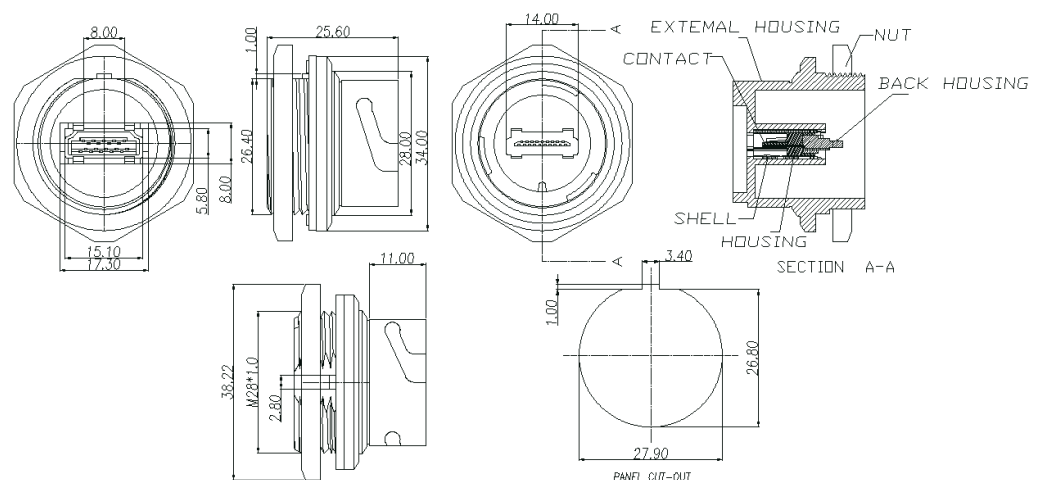
HDI-084N

HDMI A · Cable End · Female · Bayonet · Rear Fastened Solder



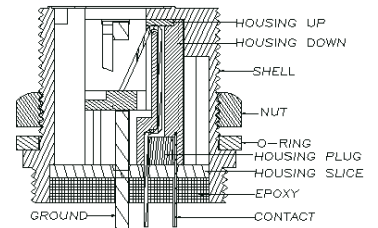
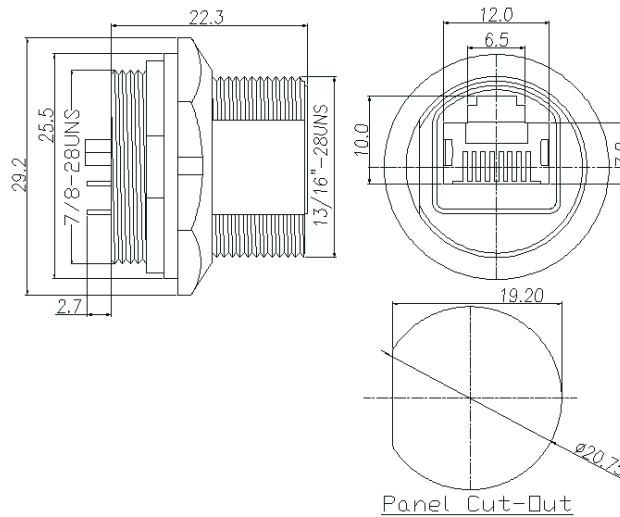
Specification :

- Water proof : IPX7



HDI-085N

RJ45 · Panel End · Female · Screw · Rear Fastened Solder



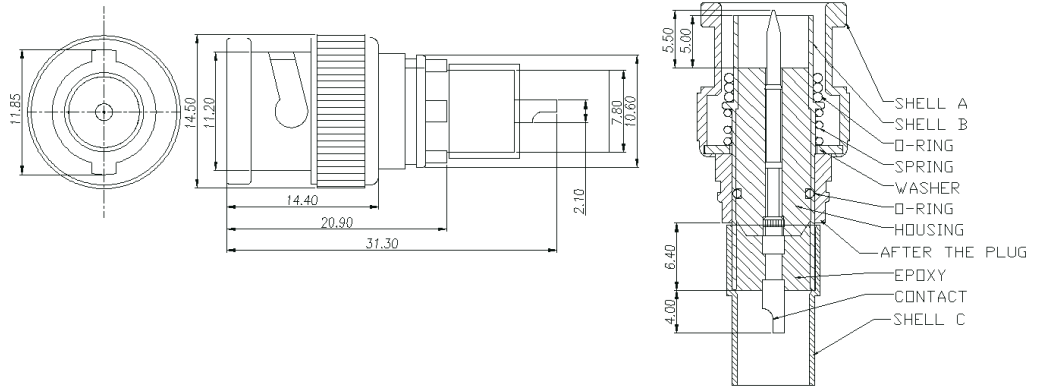
RJ-086N

BNC · Cable End · Male · Bayonet · Overmolded Straight Solder



Specification :

- Rated Voltage : 500 VRMS max.
- Impedance : 75 Ohm
- Water proof : IPX7



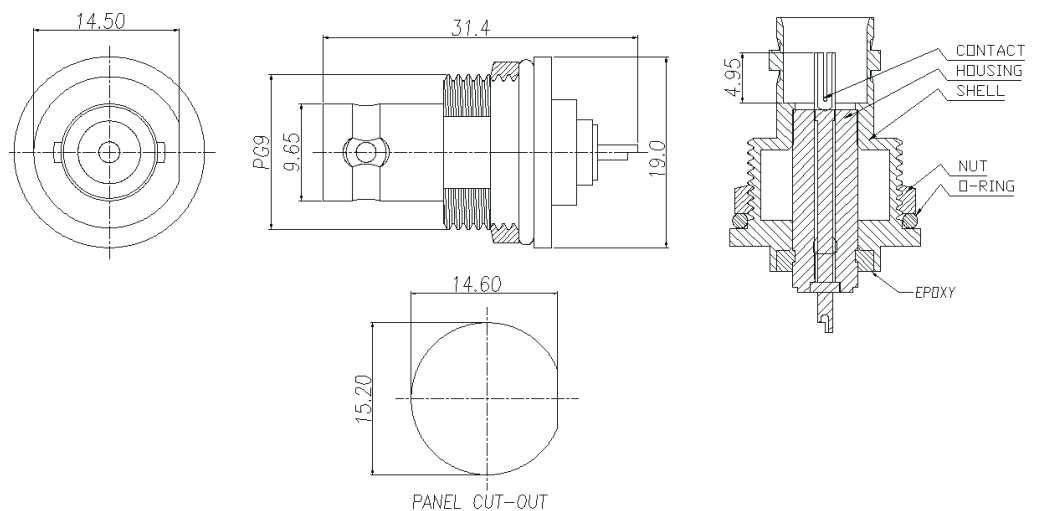
BNC-087N

BNC · Panel End · Female · Bayonet · Front Fastened Solder



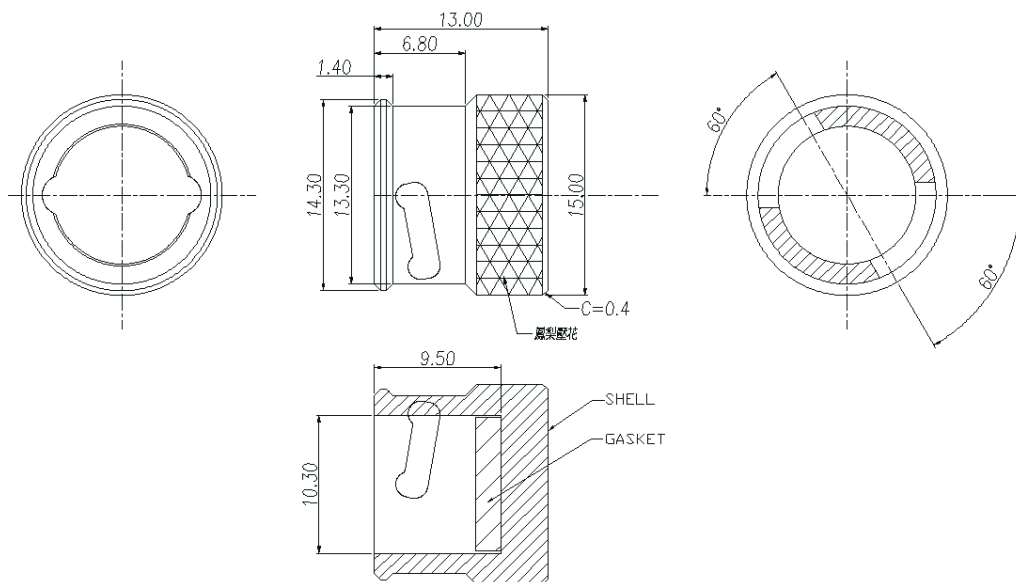
Specification :

- Rated Voltage : 500 VRMS max.
- Impedance : 75 Ohm
- Water proof : IPX7



BNC-088N

BNC · Accessories · Cap(Metal)



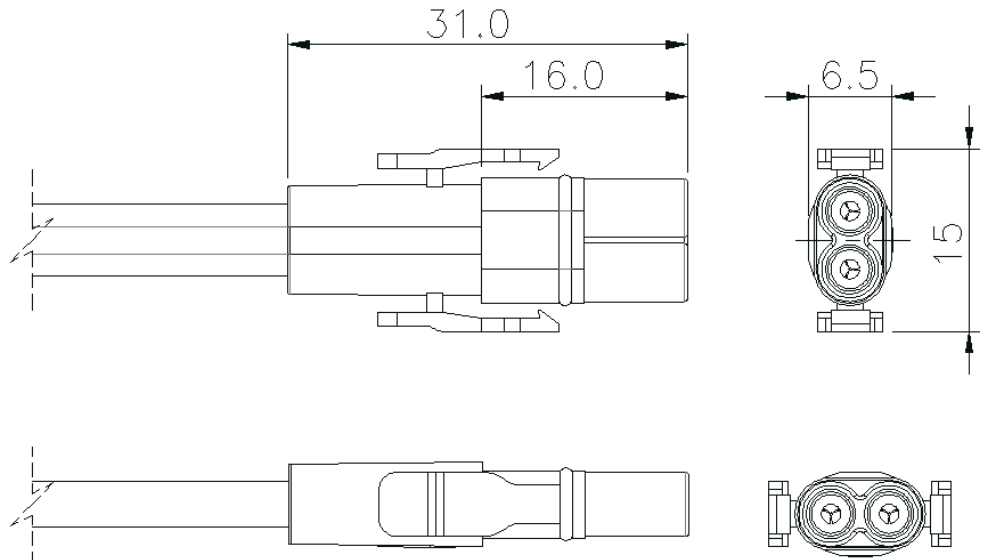
BNC-108N

Mini Snap in · Cable End · Male · Overmolded Straight Solder



Specification :

- ▶ Rated current : 5A
- ▶ Rated Voltage : 300V
- ▶ Water proof: IPX5



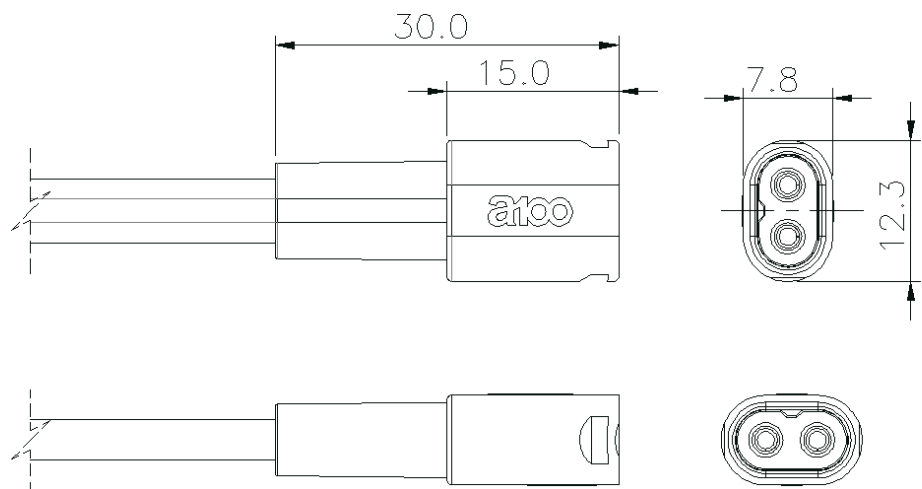
WAP-02ES

Mini Snap in · Cable End · Female · Overmolded Straight Solder



Specification :

- ▶ Rated current : 5A
- ▶ Rated Voltage : 300V
- ▶ Water proof: IPX5



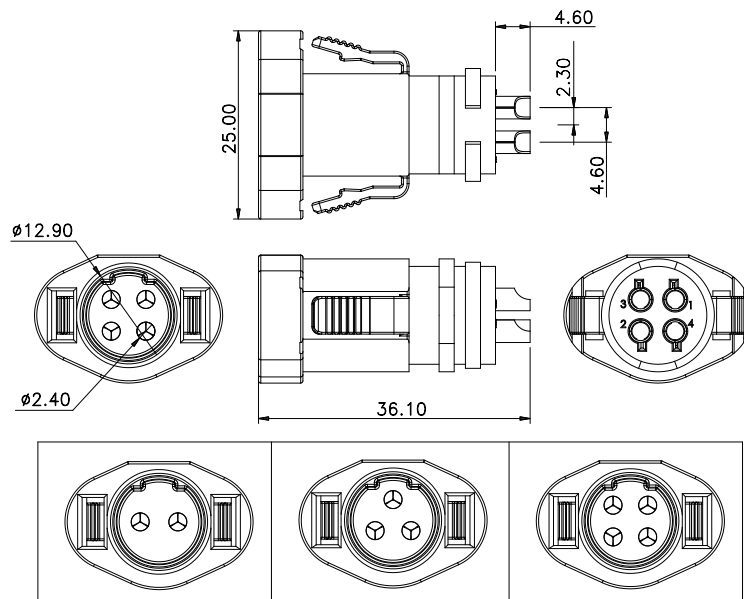
WAP-02NS

Snap in · Cable End · Male · Overmolded Straight Solder



Specification :

- ▶ Rated current : 20A
- ▶ Rated Voltage : 300V
- ▶ Water proof : IPX7



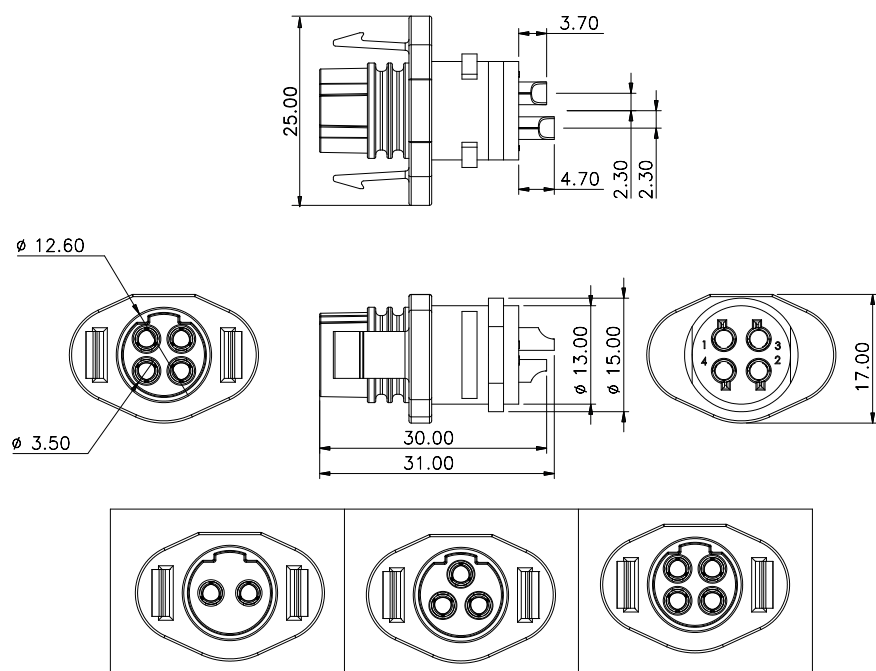
⚡ AQ1-10K2

Snap in · Cable End · Female · Overmolded Straight Solder



Specification :

- ▶ Rated current : 20A
- ▶ Rated Voltage : 300V
- ▶ Water proof : IPX7



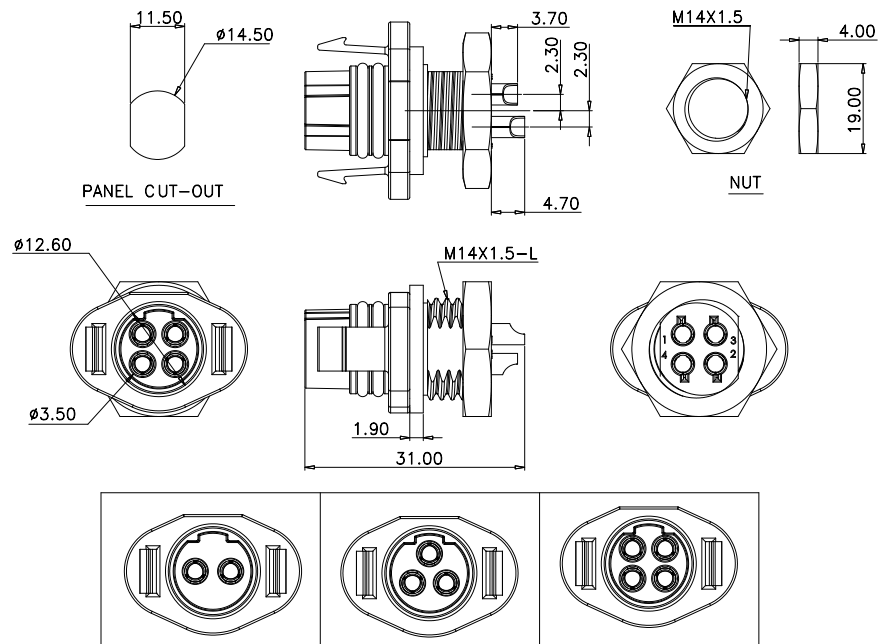
⚡ AQ1-20K2

Snap in · Panel End · Female · Rear Fastened Solder



Specification :

- ▶ Rated current : 20A
- ▶ Rated Voltage : 300V
- ▶ Water proof : IPX7

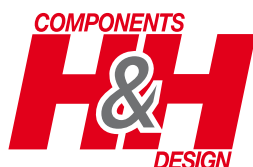


 AQ1-20K3



Inspire your passion
and happiness at work!

Vertrieb Deutschland



H&H Components GmbH

Ammerseestraße 61A • D-82061 Neuried

Tel.: +49 (0)89/244 10 04-0 • Fax: +49 (0)89/244 10 04-29

office@2h-components.de • www.2h-components.de